

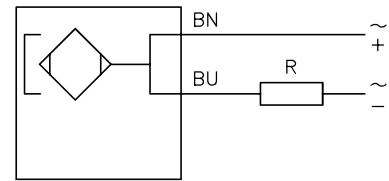
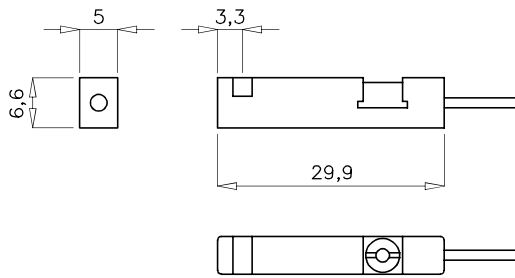
Interruttore magnetico

Magnetic switch



SERIE 391

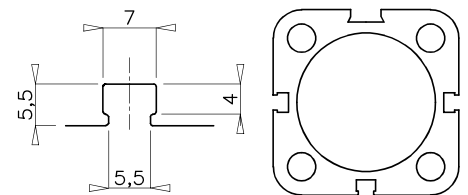
diottalevi



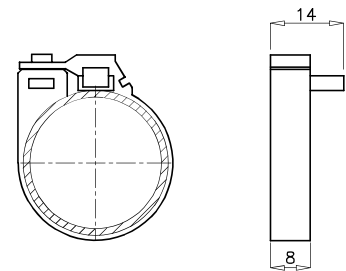
DATI TECNICI / TECHNICAL DATA

| | |
|---|--|
| - tipo / type | seniore reed / switch reed |
| - contatto / contact | N.A. / N.O |
| - fili / wires | 2 |
| - campo di tensione (AC / DC) / range voltage (AC / DC) | 3V - 130V |
| - corrente max / max current | 50mA |
| - potenza max / max power | 10W |
| - grado di protezione (IEC 60529) / safety device (IEC 60529) | IP68 |
| - protezione inversione polarità / polarity reversal protection | SI / YES |
| - temperatura di esercizio / operation temperature | -20°C / +70°C |
| - commutazione / switching time | ON 0,5mS OFF 0,1mS |
| - vita elettrica / electric life | 10 ⁶ cicli / 10 ⁶ cycles |
| - lunghezza cavo / cable lenght | 3000mm |

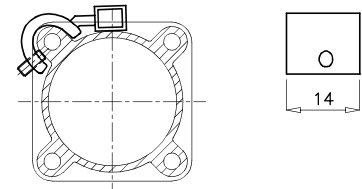
- 391.00.032** interruttore magnetico per cilindro ISO 15552 con profilo quadro e cilindro compatto
- 391.00.032** magnetic switch for cylinder ISO 15552 with square profile and for compact cylinder



- 391.10.Ø** interruttore magnetico completo di fascetta per microcilindro ISO 6432
- 391.10.Ø** magnetic switch with band for microcylinder ISO 6432



- 391.20.Ø** interruttore magnetico completo di staffa per cilindro ISO 15552 con profilo "Mickey-mouse"
- 391.20.Ø** magnetic switch with stirrup for cylinder ISO 15552 with "Mickey-mouse" profile



- 391.30.032** interruttore magnetico completo di staffa per cilindro con tiranti
- 391.30.032** magnetic switch with stirrup for cylinder with tie rods

