





CARATTERISTICHE TECNICHE

alesaggi	20	27	35	40	50
attacchi aria	1/8"				

fissaggi..... a cartuccia sfilabile

versioni..... semplice effetto - semplice effetto stelo antirotante - semplice effetto con valvola di sicurezza - doppio effetto

CARATTERISTICHE FUNZIONALI

fluido aria filtrata e lubrificata

pressione max.10 bar

temperatura0°C ÷ 90°C (-20°C con aria secca)

CARATTERISTICHE COSTRUTTIVE

testate ottone o in lega di alluminio

camicia alluminio ox. duro

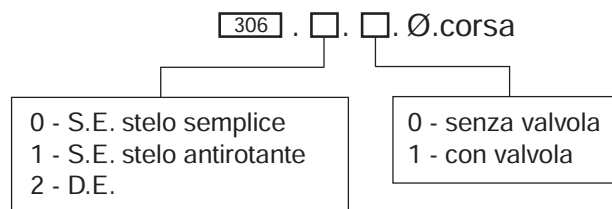
stelo in acciaio C45 cromato per le versioni S.E. - D.E.

in acciaio Fe 37 zincato per le versioni S.E. stelo antirotante

pistonein lega di alluminio

guarnizioni NBR (per alte temperature in VITON su richiesta)

LEGENDA CODICI





TECHNICAL CHARACTERISTICS

bores	20	27	35	40	50
air connection	1/8"				

fixing with slide out cartridge

versions ... single acting - single acting with non rotating piston rod - single acting with safety valve - double-acting

FUNCTIONING CHARACTERISTICS

fluid filtered and lubricated air

max. pressure 0 bar

temperature 0°C ÷ 90°C (-20°C with dry air)

MANUFACTURING CHARACTERISTICS

end covers brass or aluminium alloy

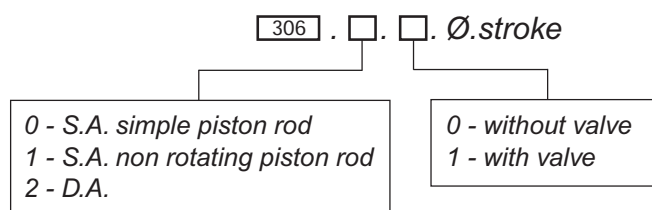
tube hard oxidised aluminium

piston rod chromed C45 steel for S.A - D.A. versions
galvanized Fe 37 steel for S.A. version non-rotating piston rod

piston aluminium alloy

seals NBR (on request VITON for high temperatures)

CODE LEGEND

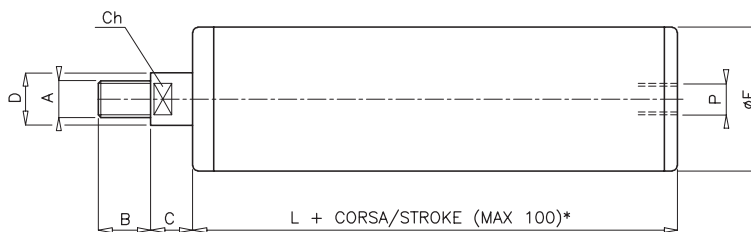
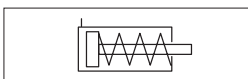


SERIE 306

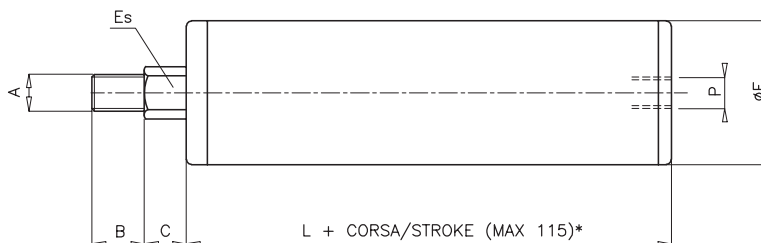
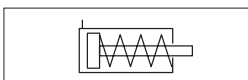
diottalevi



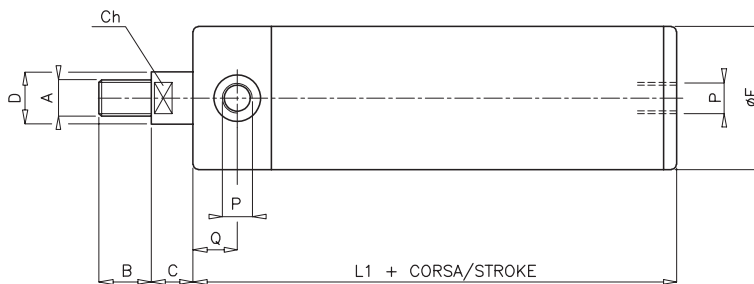
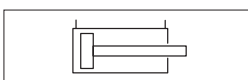
Cilindri pressori Pressor cylinders



CILINDRO PRESSORE semplice effetto codice. **306.00** Ø.corsa
PRESSOR CYLINDER single acting code. **306.00** Ø.stroke



CILINDRO PRESSORE semplice effetto, stelo antirotante codice. **306.10** Ø.corsa
PRESSOR CYLINDER single acting, non-rotating piston rod code. **306.10** Ø.stroke



CILINDRO PRESSORE doppio effetto codice. **306.20** Ø.corsa
PRESSOR CYLINDER double acting code. **306.20** Ø.stroke

ALESAGGIO BORE	A	B	C	Ch	D	ES	ØE	L	L1	P	Q
20	M 6x1	10	10	5	8	8	25	80	73	1/8"	15
27	M 8x1,25	12	10	8	10	10	31	83	73	1/8"	15
35	M 10x1,5	20	10	13	16	16	40	85	75	1/8"	16
40	M 12x1,75	20	14	13	16	16	45	93	81	1/8"	15
50	M 14x2	20	16	17	20	20	55	112	88	1/8"	17

* Per corse superiori consultare il ns. ufficio tecnico / For longer strokes contact our technical office

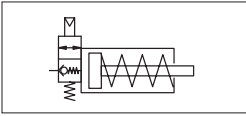
Cilindri pressori

Pressor cylinders

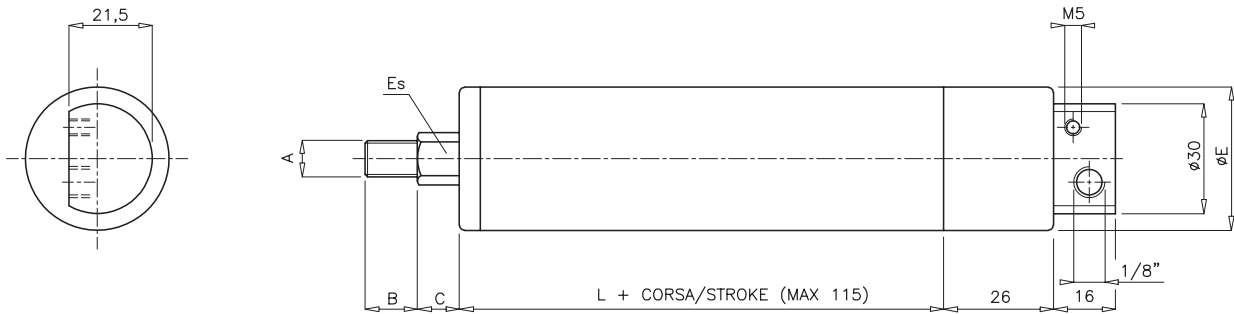


SERIE 306

diottalevi

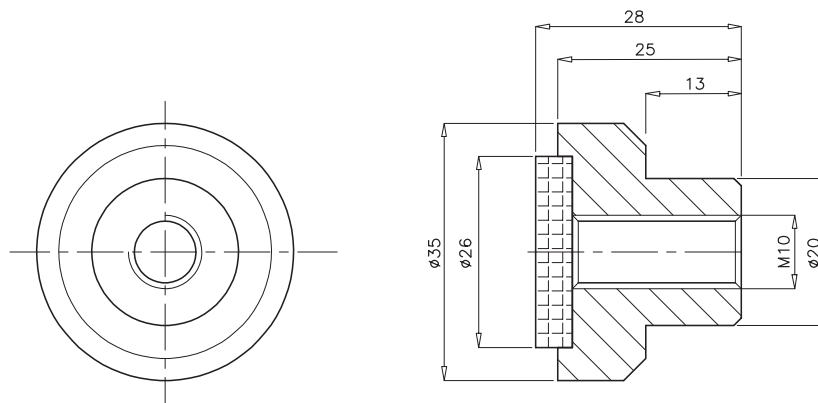


La valvola di sicurezza può essere montata anche sul tipo 306.00 alesaggi 35 - 40 - 50
 The safety valve may also be assembled on type 306.00 bore 35 - 40 - 50



CILINDRO PRESSORE semplice effetto, stelo antirotante, valvola di sicurezza codice. **306.11** Ø.corsa
PRESSOR CYLINDER single acting, non-rotating piston rod, safety valve code. **306.11** Ø.stroke

ALESAGGIO BORE	A	B	C	ØE	ES	L
35	M 10x1,5	20	10	40	16	80
40	M 12x1,75	20	14	45	16	87
50	M 14x2	20	16	55	20	106



TAMPONE IN PLASTICA codice **30905035**
PRESSOR PLASTIC PAD code. **30905035**

