

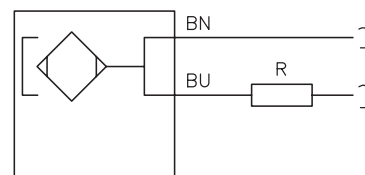
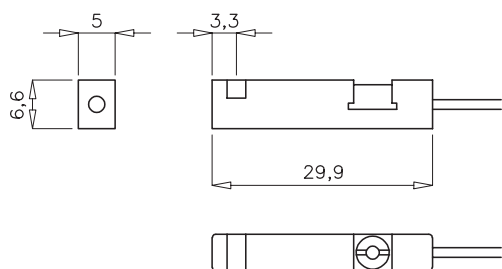
Interruttore magnetico

Magnetic switch



SERIE 391

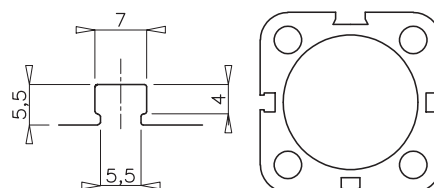
diottalevi



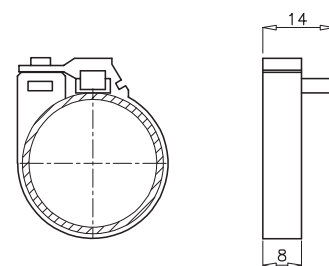
DATI TECNICI / TECHNICAL DATA

- tipo / type sensore reed / switch reed
- contatto / contact N.A. / N.O
- fili / wires 2
- campo di tensione (AC / DC) / range voltage (AC / DC) 3V - 130V
- corrente max / max current 50mA
- potenza max / max power 10W
- grado di protezione (IEC 60529) / safety device (IEC 60529) IP68
- protezione inversione polarità / polarity reversal protection SI / YES
- temperatura di esercizio / operation temperature -20°C / +70°C
- commutazione / switching time ON 0,5mS OFF 0,1mS
- vita elettrica / electric life 10⁶ cicli / 10⁶ cycles
- lunghezza cavo / cable length 3000mm

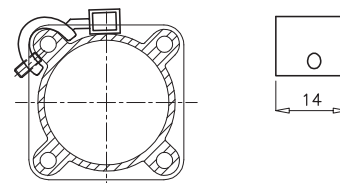
- 391.00.032** interruttore magnetico per cilindro ISO 15552 con profilo quadro e cilindro compatto
391.00.032 magnetic switch for cylinder ISO 15552 with square profile and for compact cylinder



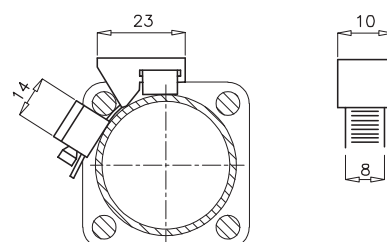
- 391.10.Ø** interruttore magnetico completo di fascetta per microcilindro ISO 6432
391.10.Ø magnetic switch with band for microcylinder ISO 6432

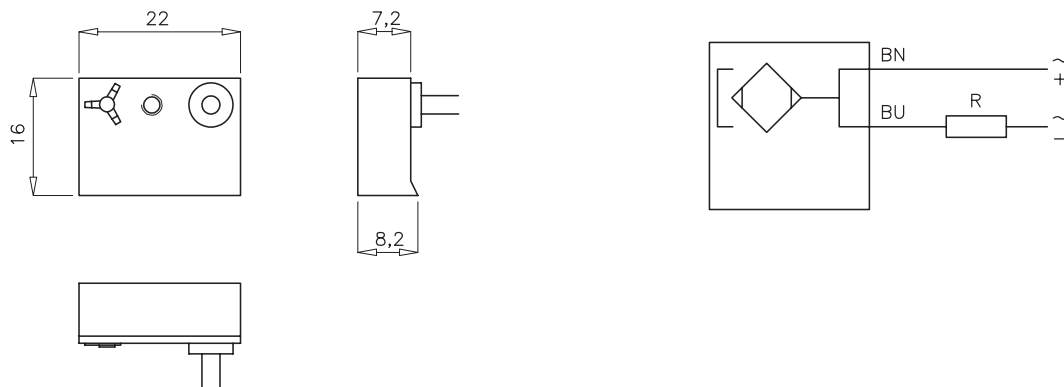


- 391.20.Ø** interruttore magnetico completo di staffa per cilindro ISO 15552 con profilo "Mickey-mouse"
391.20.Ø magnetic switch with stirrup for cylinder ISO 15552 with "Mickey-mouse" profile



- 391.30.032** interruttore magnetico completo di staffa per cilindro con tiranti
391.30.032 magnetic switch with stirrup for cylinder with tie rods





DATI TECNICI / TECHNICAL DATA

- tipo / type sensore reed / switch reed
- contatto / contact N.A. / N.O
- fili / wires 2
- campo di tensione (AC / DC) / range voltage (AC / DC) 3V - 130V
- corrente max / max current 300mA
- potenza max / max power 10W
- grado di protezione (IEC 60529) / safety device (IEC 60529) IP67
- protezione inversione polarità / polarity reversal protection SI / YES
- temperatura di esercizio / operation temperature -20°C / +70°C
- commutazione / switching time ON 0,5mS OFF 0,1mS
- vita elettrica / electric life 10⁶ cicli / 10⁶ cycles
- lunghezza cavo / cable lenght 3000mm

392.00.032 interruttore magnetico per cilindro corsa breve (serie 360), per cilindro compatto (serie 380) e per cilindro ISO 15552 (serie 320) con profilo quadro

392.00.032 magnetic switch for short stroke cylinder (360 series), for compact cylinder (380 series) and for cylinder ISO 15552 (320 series) with square profile

