

Cilindri con fissaggi integrati
Integrated fixing cylinders

SERIE 300

diottalevi





CARATTERISTICHE TECNICHE

I cilindri pneumatici della serie 300 sono senza deceleratori e di costruzione semplice ed economica.

Le testate avvitate alla canna complete di sistema di fissaggio permettono di ottenere ingombri molto contenuti.

| | | | | | | | | | |
|-------------------------|------|----|------|----|----|------|----|----|-----|
| alesaggi | 20 | 27 | 35 | 40 | 50 | 60 | 70 | 85 | 100 |
| attacchi aria | 1/8" | | 1/8" | | | 1/4" | | | |
| tolleranza corsa | ±0,8 | | ±1 | | | ±1,3 | | | |

fissaggi..... vite anteriore - cerniera posteriore - flangia anteriore - piedini - flangia posteriore - fissaggio su stelo
versioni..... doppio effetto - semplice effetto - stelo semplice - stelo passante - testate ridotte - tandem - doppia stazione - doppio

CARATTERISTICHE FUNZIONALI

fluidoaria filtrata e lubrificata
pressione max.12 bar
temperatura0°C ÷ 80°C (-20°C con aria secca)

CARATTERISTICHE COSTRUTTIVE

testate in lega di alluminio
camicia alluminio ox. duro
stelo in acciaio C45 cromato
boccola guida stelo..... autolubrificante in bronzo sinterizzato
pistone in lega di alluminio
guarnizioni NBR (per alte temperature in VITON su richiesta)
anello guida pistoneresina acetlica ad alta scorrevolezza

CORSE STANDARD DISPONIBILI VALIDE PER TUTTI GLI ALESAGGI A DOPPIO EFFETTO

mm 10 - 15 - 20 - 25 - 30 - 35 - 40 - 50 - 60 - 70 - 75 - 80 - 100 - 120 - 125 - 130 - 140 - 150 - 160 - 170 - 175 - 180 - 200 - 250 - 300 - 350 - 400 - 450 - 500 - 600 - 700 - 800 - 900 - 1000

CORSA MASSIMA CILINDRI A SEMPLICE EFFETTO

| | | | | | | | | | |
|----------|----|----|----|----|----|----|----|----|-----|
| alesaggi | 20 | 27 | 35 | 40 | 50 | 60 | 70 | 85 | 100 |
| corsa | 50 | 50 | 50 | 60 | 60 | 70 | 70 | 80 | 100 |

LEGENDA CODICI

□ . □ . □ . Ø . corsa

300 - fissaggio vite anteriore
 301 - fissaggio cerniera posteriore
 302 - fissaggio flangia anteriore
 303 - fissaggio a piedini
 304 - fissaggio flangia posteriore
 305 - fissaggio su stelo (cil. doppio)

0 - stelo semplice
 1 - stelo passante
 2 - cilindro tandem
 3 - doppia stazione
 4 - cilindro doppio

0 - D.E.
 2 - S.E.
 4 - D.E. testate ridotte
 5 - D.E. viton



TECHNICAL CHARACTERISTICS

Pneumatic cylinders series 300 do not have decelerators and are made of simple and cheaper construction.

End covers screwed to the tube completed by fixing system, they keep overall dimensions to a minimum.

| | | | | | | | | | |
|--------------------------|------|----|------|----|----|------|----|----|-----|
| bores | 20 | 27 | 35 | 40 | 50 | 60 | 70 | 85 | 100 |
| air attachments | 1/8" | | 1/8" | | | 1/4" | | | |
| stroke tolerances | ±0,8 | | ±1 | | | ±1,3 | | | |

fixing..... front screw - rear bracket - front flange - feet - rear flange - fixing on piston rod

versions.... double acting - single acting - simple piston rod - double piston rod - reduced end covers - tandem - double station - double

FUNCTIONING CHARACTERISTICS

fluid filtered and lubricated air
max. pressure 12 bar
temperature 0°C ÷ 80°C (-20°C with dry air)

MANUFACTURING CHARACTERISTICS

end covers aluminium alloy
tube..... hard oxidised aluminium
piston rod chromed C45 steel
piston rod guide bush..... self-lubricating in sintered bronze
piston aluminium alloy
seals NBR (on request VITON for high temperatures)
piston guide ring high flowability acetalic resin

STANDARD STROKES AVAILABLE FOR ALL DOUBLE-ACTING BORES

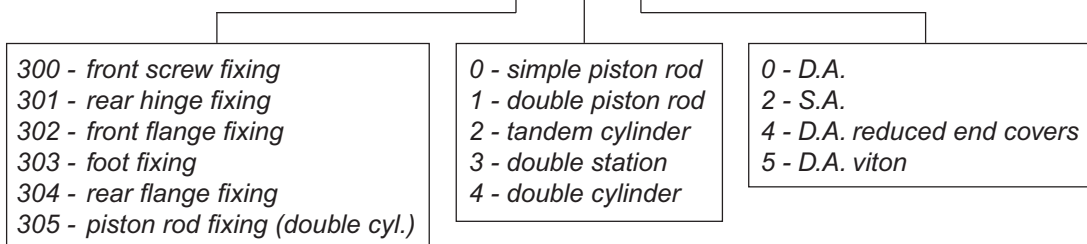
mm 10 - 15 - 20 - 25 - 30 - 35 - 40 - 50 - 60 - 70 - 75 - 80 - 100 - 120 - 125 - 130 - 140 - 150 - 160 - 170 - 175 - 180 - 200 - 250 - 300 - 350 - 400 - 450 - 500 - 600 - 700 - 800 - 900 - 1000

MAXIMUM STROKE SINGLE ACTING CYLINDERS

| | | | | | | | | | |
|---------------|----|----|----|----|----|----|----|----|-----|
| bores | 20 | 27 | 35 | 40 | 50 | 60 | 70 | 85 | 100 |
| stroke | 50 | 50 | 50 | 60 | 60 | 70 | 70 | 80 | 100 |

CODE LEGEND

□ . □ . □ . Ø . stroke

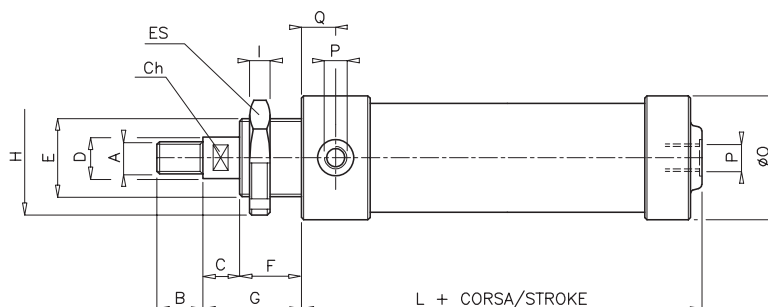
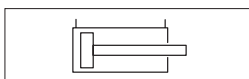


SERIE 300

diottalevi

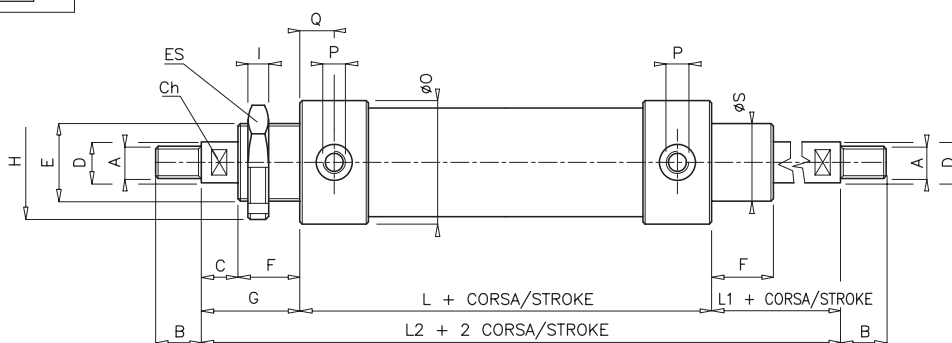
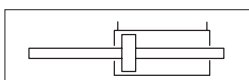


Cilindri con fissaggi integrati Integrated fixing cylinders



FISSAGGIO VITE ANTERIORE codice. **300.00** Ø.corsa
FRONT SCREW FIXING code. **300.00** Ø.stroke

| ALESAGGIO BORE | A | B | Ch | C | D | E | F | G | H | ES | I | L | ØO | P | Q |
|-------------------|-----------|----|----|----|----|--------|----|----|----|----|----|----|-----|------|----|
| 20 | M 6x1 | 9 | 6 | 8 | 8 | 24x2 | 16 | 24 | - | 32 | 5 | 45 | 30 | 1/8" | 9 |
| 27 | M 8x1,25 | 12 | 8 | 10 | 10 | 28x2 | 20 | 30 | - | 36 | 6 | 48 | 35 | 1/8" | 10 |
| 35 | M 10x1,5 | 15 | 10 | 12 | 12 | 32x2 | 24 | 36 | - | 40 | 7 | 53 | 45 | 1/8" | 10 |
| 40 | M 10x1,5 | 15 | 10 | 12 | 12 | 36x2 | 32 | 44 | - | 46 | 8 | 57 | 50 | 1/8" | 11 |
| 50 | M 12x1,75 | 18 | 12 | 15 | 14 | 40x1,5 | 32 | 47 | 58 | - | 9 | 61 | 63 | 1/8" | 11 |
| 60 | M 14x2 | 21 | 15 | 17 | 18 | 45x1,5 | 32 | 49 | 65 | - | 10 | 66 | 73 | 1/4" | 13 |
| 70 | M 16x2 | 24 | 17 | 18 | 20 | 50x1,5 | 35 | 53 | 70 | - | 11 | 66 | 84 | 1/4" | 12 |
| 85 | M 18x2,5 | 27 | 19 | 20 | 22 | 60x2 | 45 | 65 | 80 | - | 11 | 74 | 100 | 1/4" | 13 |
| 100 | M 20x2,5 | 30 | 20 | 23 | 24 | 70x2 | 50 | 73 | 92 | - | 12 | 81 | 116 | 1/4" | 14 |



FISSAGGIO VITE ANTERIORE stelo passante codice. **300.10** Ø.corsa
FRONT SCREW FIXING double piston rod code. **300.10** Ø.stroke

| ALESAGGIO BORE | A | B | Ch | C | D | E | F | G | H | ES | I | L | L1 | L2 | ØO | P | Q | ØS |
|-------------------|-----------|----|----|----|----|--------|----|----|----|----|----|----|----|-----|-----|------|----|----|
| 20 | M 6x1 | 9 | 6 | 8 | 8 | 24x2 | 16 | 24 | - | 32 | 5 | 53 | 24 | 101 | 30 | 1/8" | 9 | 24 |
| 27 | M 8x1,25 | 12 | 8 | 10 | 10 | 28x2 | 20 | 30 | - | 36 | 6 | 64 | 30 | 124 | 35 | 1/8" | 10 | 28 |
| 35 | M 10x1,5 | 15 | 10 | 12 | 12 | 32x2 | 24 | 36 | - | 40 | 7 | 66 | 36 | 138 | 45 | 1/8" | 10 | 32 |
| 40 | M 10x1,5 | 15 | 10 | 12 | 12 | 36x2 | 32 | 44 | - | 46 | 8 | 68 | 44 | 156 | 50 | 1/8" | 11 | 36 |
| 50 | M 12x1,75 | 18 | 12 | 15 | 14 | 40x1,5 | 32 | 47 | 58 | - | 9 | 68 | 47 | 162 | 63 | 1/8" | 11 | 40 |
| 60 | M 14x2 | 21 | 15 | 17 | 18 | 45x1,5 | 32 | 49 | 65 | - | 10 | 78 | 49 | 176 | 73 | 1/4" | 13 | 45 |
| 70 | M 16x2 | 24 | 17 | 18 | 20 | 50x1,5 | 35 | 53 | 70 | - | 11 | 74 | 53 | 180 | 84 | 1/4" | 12 | 50 |
| 85 | M 18x2,5 | 27 | 19 | 20 | 22 | 60x2 | 45 | 65 | 80 | - | 11 | 80 | 65 | 210 | 100 | 1/4" | 13 | 60 |
| 100 | M 20x2,5 | 30 | 20 | 23 | 24 | 70x2 | 50 | 73 | 92 | - | 12 | 89 | 73 | 235 | 116 | 1/4" | 14 | 70 |

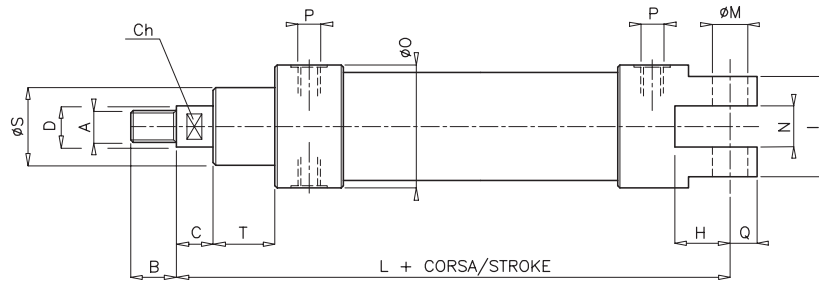
Cilindri con fissaggi integrati

Integrated fixing cylinders



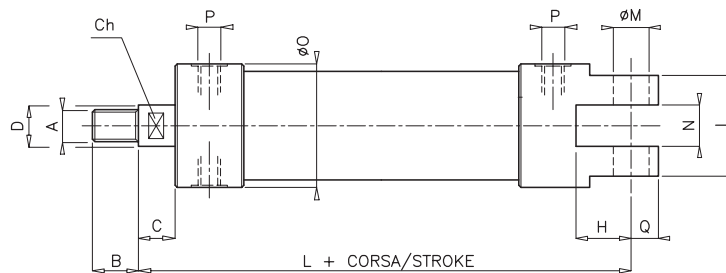
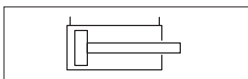
SERIE 300

diottalevi



FISSAGGIO CERNIERA POSTERIORE codice. 301.00 Ø.corsa
REAR BRACKET FIXING code. 301.00 Ø.stroke

| ALESAGGIO BORE | A | B | Ch | C | D | H | I | L | ØM | N | ØO | P | Q | ØS | T |
|-------------------|-----------|----|----|----|----|----|----|-----|----|----|-----|------|----|----|----|
| 20 | M 6x1 | 9 | 6 | 8 | 8 | 10 | 22 | 85 | 5 | 8 | 30 | 1/8" | 6 | 24 | 16 |
| 27 | M 8x1,25 | 12 | 8 | 10 | 10 | 18 | 25 | 95 | 6 | 9 | 35 | 1/8" | 7 | 28 | 20 |
| 35 | M 10x1,5 | 15 | 10 | 12 | 12 | 22 | 32 | 107 | 8 | 12 | 45 | 1/8" | 9 | 32 | 24 |
| 40 | M 10x1,5 | 15 | 10 | 12 | 12 | 23 | 40 | 122 | 10 | 18 | 50 | 1/8" | 10 | 36 | 32 |
| 50 | M 12x1,75 | 18 | 12 | 15 | 14 | 27 | 50 | 131 | 12 | 25 | 63 | 1/8" | 13 | 40 | 32 |
| 60 | M 14x2 | 21 | 15 | 17 | 18 | 28 | 58 | 140 | 14 | 26 | 73 | 1/4" | 15 | 45 | 32 |
| 70 | M 16x2 | 24 | 17 | 18 | 20 | 35 | 71 | 152 | 16 | 35 | 84 | 1/4" | 16 | 50 | 35 |
| 85 | M 18x2,5 | 27 | 19 | 20 | 22 | 35 | 77 | 168 | 18 | 40 | 100 | 1/4" | 18 | 60 | 45 |
| 100 | M 20x2,5 | 30 | 20 | 23 | 24 | 44 | 81 | 192 | 20 | 40 | 116 | 1/4" | 21 | 70 | 50 |



Solo a doppio effetto
 Only double-acting

FISSAGGIO CERNIERA POSTERIORE serie ridotta codice. 301.04 Ø.corsa
REAR BRACKET FIXING reduced series code. 301.04 Ø.stroke

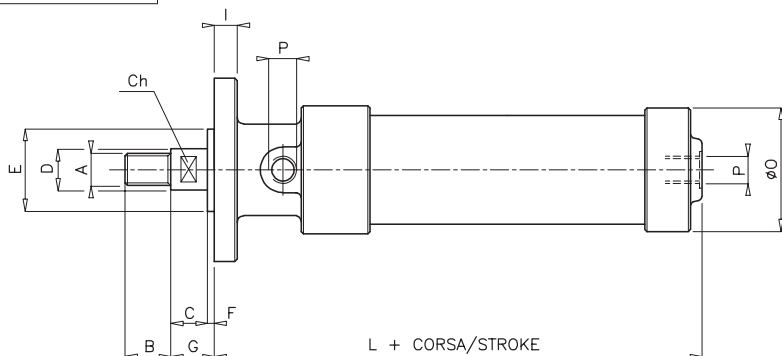
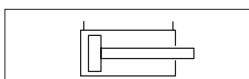
| ALESAGGIO BORE | A | B | Ch | C | D | H | I | L | ØM | N | ØO | P | Q |
|-------------------|-----------|----|----|----|----|----|----|-----|----|----|-----|------|----|
| 20 | M 6x1 | 9 | 6 | 8 | 8 | 10 | 22 | 72 | 5 | 8 | 30 | 1/8" | 6 |
| 27 | M 8x1,25 | 12 | 8 | 8 | 10 | 18 | 25 | 75 | 6 | 9 | 35 | 1/8" | 7 |
| 35 | M 10x1,5 | 15 | 10 | 11 | 12 | 22 | 32 | 84 | 8 | 12 | 45 | 1/8" | 9 |
| 40 | M 10x1,5 | 15 | 10 | 12 | 12 | 23 | 40 | 90 | 10 | 18 | 50 | 1/8" | 10 |
| 50 | M 12x1,75 | 18 | 12 | 14 | 14 | 27 | 50 | 101 | 12 | 25 | 63 | 1/8" | 13 |
| 60 | M 14x2 | 21 | 15 | 17 | 18 | 28 | 58 | 110 | 14 | 26 | 73 | 1/4" | 15 |
| 70 | M 16x2 | 24 | 17 | 16 | 20 | 35 | 71 | 122 | 16 | 35 | 84 | 1/4" | 16 |
| 85 | M 18x2,5 | 27 | 19 | 19 | 22 | 35 | 77 | 128 | 18 | 40 | 100 | 1/4" | 18 |
| 100 | M 20x2,5 | 30 | 20 | 20 | 24 | 44 | 81 | 142 | 20 | 40 | 116 | 1/4" | 21 |

SERIE 300

diottalevi

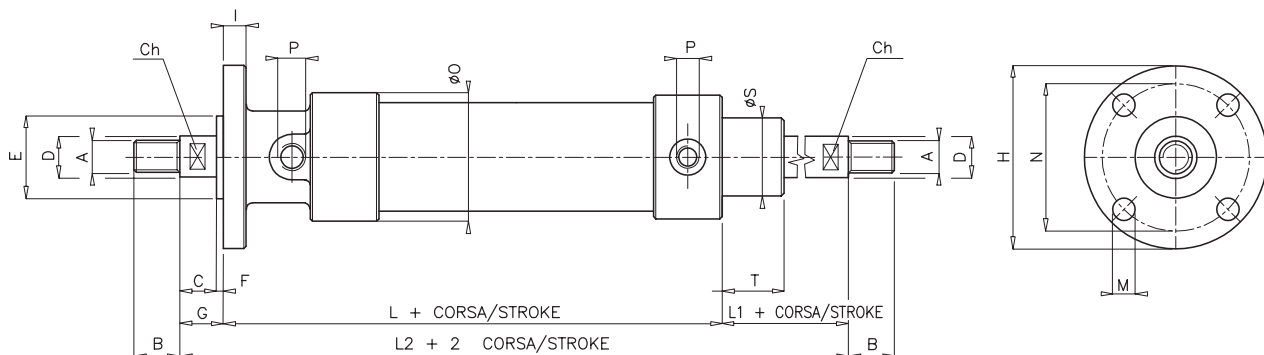
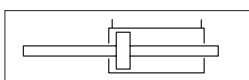


Cilindri con fissaggi integrati Integrated fixing cylinders



FISSAGGIO FLANGIA ANTERIORE codice. **302.00** Ø.corsa
FRONT FLANGE FIXING code. **302.00** Ø.stroke

| ALESAGGIO BORE | A | B | Ch | C | D | E | F | G | H | I | L | M | N | ØO | P |
|-------------------|-----------|----|----|----|----|----|---|----|-----|----|-----|------|-----|-----|------|
| 20 | M 6x1 | 9 | 6 | 8 | 8 | 23 | 2 | 10 | 50 | 4 | 59 | 4,5 | 39 | 30 | 1/8" |
| 27 | M 8x1,25 | 12 | 8 | 10 | 10 | 30 | 2 | 12 | 58 | 5 | 66 | 4,5 | 48 | 35 | 1/8" |
| 35 | M 10x1,5 | 15 | 10 | 12 | 12 | 36 | 2 | 14 | 65 | 6 | 75 | 5,5 | 54 | 45 | 1/8" |
| 40 | M 10x1,5 | 15 | 10 | 12 | 12 | 40 | 3 | 15 | 70 | 7 | 86 | 6,5 | 57 | 50 | 1/8" |
| 50 | M 12x1,75 | 18 | 12 | 15 | 14 | 54 | 4 | 19 | 87 | 8 | 89 | 6,5 | 75 | 63 | 1/8" |
| 60 | M 14x2 | 21 | 15 | 17 | 18 | 60 | 4 | 21 | 100 | 8 | 94 | 6,5 | 82 | 73 | 1/4" |
| 70 | M 16x2 | 24 | 17 | 18 | 20 | 70 | 4 | 22 | 119 | 10 | 97 | 8,5 | 100 | 84 | 1/4" |
| 85 | M 18x2,5 | 27 | 19 | 20 | 22 | 80 | 4 | 24 | 140 | 11 | 115 | 10,5 | 120 | 100 | 1/4" |
| 100 | M 20x2,5 | 30 | 20 | 23 | 24 | 88 | 4 | 27 | 160 | 12 | 127 | 10,5 | 137 | 116 | 1/4" |



FISSAGGIO FLANGIA ANTERIORE stelo passante codice. **302.10** Ø.corsa
FRONT FLANGE FIXING double piston rod code. **302.10** Ø.stroke

| ALESAGGIO BORE | A | B | Ch | C | D | E | F | G | H | I | L | L1 | L2 | M | N | ØO | P | ØS | T |
|-------------------|-----------|----|----|----|----|----|---|----|-----|----|-----|----|-----|------|-----|-----|------|----|----|
| 20 | M 6x1 | 9 | 6 | 8 | 8 | 23 | 2 | 10 | 50 | 4 | 67 | 24 | 101 | 4,5 | 39 | 30 | 1/8" | 24 | 16 |
| 27 | M 8x1,25 | 12 | 8 | 10 | 10 | 30 | 2 | 12 | 58 | 5 | 82 | 30 | 124 | 4,5 | 48 | 35 | 1/8" | 28 | 20 |
| 35 | M 10x1,5 | 15 | 10 | 12 | 12 | 36 | 2 | 14 | 65 | 6 | 88 | 36 | 138 | 5,5 | 54 | 45 | 1/8" | 32 | 24 |
| 40 | M 10x1,5 | 15 | 10 | 12 | 12 | 40 | 3 | 15 | 70 | 7 | 97 | 44 | 156 | 6,5 | 57 | 50 | 1/8" | 36 | 32 |
| 50 | M 12x1,75 | 18 | 12 | 15 | 14 | 54 | 4 | 19 | 87 | 8 | 96 | 47 | 162 | 6,5 | 75 | 63 | 1/8" | 40 | 32 |
| 60 | M 14x2 | 21 | 15 | 17 | 18 | 60 | 4 | 21 | 100 | 8 | 106 | 49 | 176 | 6,5 | 82 | 73 | 1/4" | 45 | 32 |
| 70 | M 16x2 | 24 | 17 | 18 | 20 | 70 | 4 | 22 | 119 | 10 | 105 | 53 | 180 | 8,5 | 100 | 84 | 1/4" | 50 | 35 |
| 85 | M 18x2,5 | 27 | 19 | 20 | 22 | 80 | 4 | 24 | 140 | 11 | 121 | 65 | 210 | 10,5 | 120 | 100 | 1/4" | 60 | 45 |
| 100 | M 20x2,5 | 30 | 20 | 23 | 24 | 88 | 4 | 27 | 160 | 12 | 135 | 73 | 235 | 10,5 | 137 | 116 | 1/4" | 70 | 50 |

Cilindri con fissaggi integrati

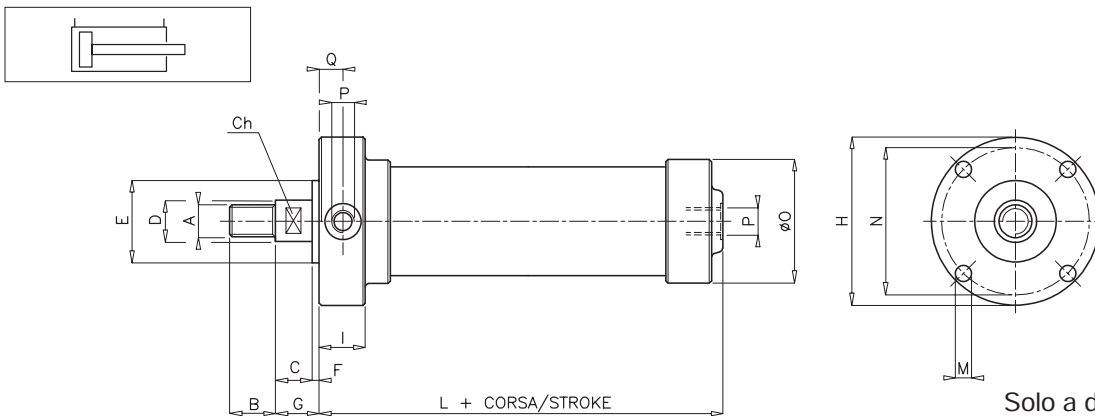
Integrated fixing cylinders



SERIE 300

diottalevi

diottalevi



Solo a doppio effetto
Only double-acting

FISSAGGIO FLANGIA ANTERIORE serie ridotta codice. **302.04** Ø.corsa
FRONT FLANGE FIXING reduced series code. **302.04** Ø.stroke

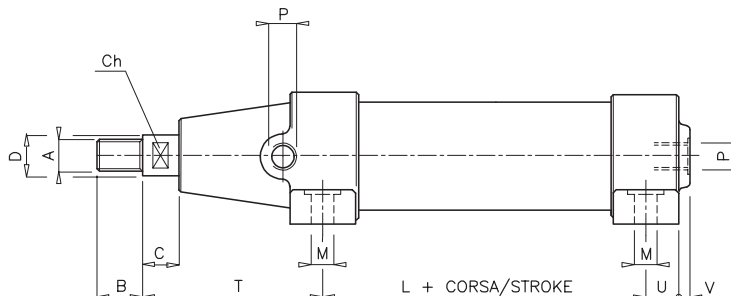
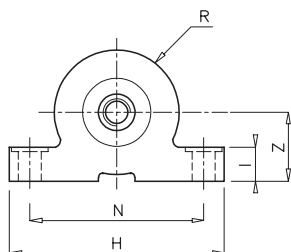
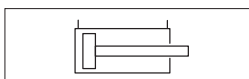
| ALESAGGIO BORE | A | B | Ch | C | D | E | F | G | H | I | L | M | N | ØO | P | Q |
|-------------------|-----------|----|----|----|----|----|---|----|-----|----|----|------|-----|-----|------|------|
| 20 | M 6x1 | 9 | 6 | 8 | 8 | 23 | 2 | 10 | 50 | 18 | 46 | 4,5 | 39 | 30 | 1/8" | 9 |
| 27 | M 8x1,25 | 12 | 8 | 8 | 10 | 30 | 2 | 10 | 60 | 19 | 48 | 4,5 | 48 | 35 | 1/8" | 9,5 |
| 35 | M 10x1,5 | 15 | 10 | 11 | 12 | 38 | 2 | 13 | 70 | 19 | 53 | 5,5 | 59 | 45 | 1/8" | 9,5 |
| 40 | M 10x1,5 | 15 | 10 | 12 | 12 | 40 | 3 | 15 | 75 | 21 | 54 | 5,5 | 62 | 50 | 1/8" | 10,5 |
| 50 | M 12x1,75 | 18 | 12 | 14 | 14 | 50 | 3 | 17 | 90 | 23 | 61 | 6,5 | 75 | 63 | 1/8" | 11,5 |
| 60 | M 14x2 | 21 | 15 | 17 | 18 | 62 | 3 | 20 | 100 | 26 | 65 | 8,5 | 86 | 73 | 1/4" | 13 |
| 70 | M 16x2 | 24 | 17 | 16 | 20 | 72 | 4 | 20 | 120 | 27 | 69 | 8,5 | 100 | 84 | 1/4" | 13,5 |
| 85 | M 18x2,5 | 27 | 19 | 19 | 22 | 80 | 4 | 23 | 140 | 28 | 76 | 10,5 | 120 | 100 | 1/4" | 14 |
| 100 | M 20x2,5 | 30 | 20 | 20 | 24 | 88 | 4 | 24 | 160 | 28 | 80 | 10,5 | 137 | 116 | 1/4" | 14 |

SERIE 300

diottalevi

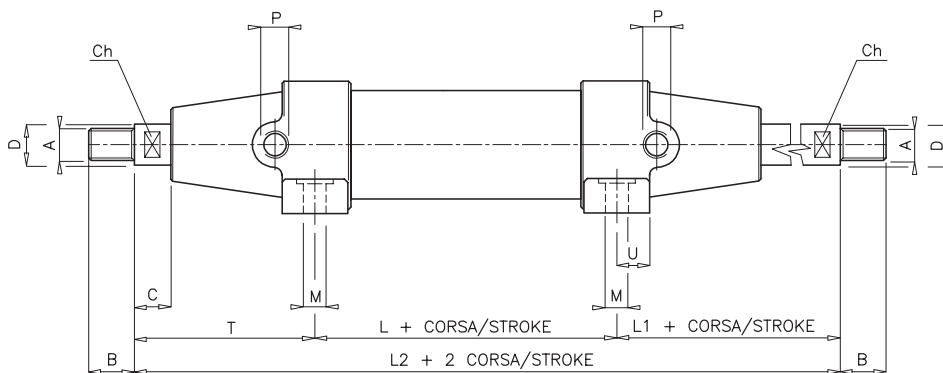
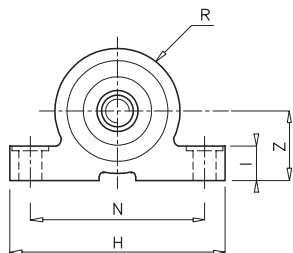
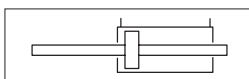


Cilindri con fissaggi integrati Integrated fixing cylinders



FISSAGGIO A PIEDINI codice. 303.00 Ø.corsa
FOOT FIXING code. 303.00 Ø.stroke

| ALESAGGIO BORE | A | B | Ch | C | D | H | I | L | M | N | P | R | T | U | V | Z |
|-------------------|-----------|----|----|----|----|-----|----|----|-----|-----|------|----|------|-----|---|----|
| 27 | M 8x1,25 | 12 | 8 | 10 | 10 | 55 | 10 | 19 | 4,5 | 45 | 1/8" | 18 | 50 | 13 | - | 19 |
| 35 | M 10x1,5 | 15 | 10 | 12 | 12 | 77 | 12 | 25 | 5,5 | 59 | 1/8" | 23 | 54 | 9 | 3 | 24 |
| 40 | M 10x1,5 | 15 | 10 | 12 | 12 | 86 | 13 | 25 | 5,5 | 65 | 1/8" | 25 | 65,5 | 9,5 | 3 | 27 |
| 50 | M 12x1,75 | 18 | 12 | 15 | 14 | 97 | 16 | 22 | 5,5 | 78 | 1/8" | 32 | 70 | 11 | 5 | 31 |
| 60 | M 14x2 | 21 | 15 | 17 | 18 | 110 | 17 | 26 | 6,5 | 90 | 1/4" | 37 | 75 | 13 | 6 | 39 |
| 70 | M 16x2 | 24 | 17 | 18 | 20 | 125 | 18 | 26 | 8,5 | 100 | 1/4" | 42 | 77 | 13 | 6 | 44 |
| 85 | M 18x2,5 | 27 | 19 | 20 | 22 | 147 | 20 | 36 | 8,5 | 120 | 1/4" | 50 | 87 | 14 | 6 | 51 |
| 100 | M 20x2,5 | 30 | 20 | 23 | 24 | 166 | 22 | 37 | 8,5 | 136 | 1/4" | 58 | 99 | 14 | 6 | 59 |



FISSAGGIO A PIEDINI stelo passante codice. 303.10 Ø.corsa
FOOT FIXING double piston rod code. 303.10 Ø.stroke

| ALESAGGIO BORE | A | B | Ch | C | D | H | I | L | L1 | L2 | M | N | P | R | T | U | Z |
|-------------------|-----------|----|----|----|----|-----|----|----|------|-----|-----|-----|------|----|------|----|----|
| 27 | M 8x1,25 | 12 | 8 | 10 | 10 | 55 | 10 | 24 | 50 | 124 | 4,5 | 45 | 1/8" | 18 | 50 | 10 | 19 |
| 35 | M 10x1,5 | 15 | 10 | 12 | 12 | 77 | 12 | 30 | 54 | 138 | 5,5 | 59 | 1/8" | 23 | 54 | 9 | 24 |
| 40 | M 10x1,5 | 15 | 10 | 12 | 12 | 86 | 13 | 25 | 65,5 | 156 | 5,5 | 65 | 1/8" | 25 | 65,5 | 10 | 27 |
| 50 | M 12x1,75 | 18 | 12 | 15 | 14 | 97 | 16 | 22 | 70 | 162 | 5,5 | 78 | 1/8" | 32 | 70 | 11 | 31 |
| 60 | M 14x2 | 21 | 15 | 17 | 18 | 110 | 17 | 26 | 75 | 176 | 6,5 | 90 | 1/4" | 37 | 75 | 13 | 39 |
| 70 | M 16x2 | 24 | 17 | 18 | 20 | 125 | 18 | 26 | 77 | 180 | 8,5 | 100 | 1/4" | 42 | 77 | 13 | 44 |
| 85 | M 18x2,5 | 27 | 19 | 20 | 22 | 147 | 20 | 36 | 87 | 210 | 8,5 | 120 | 1/4" | 50 | 87 | 14 | 51 |
| 100 | M 20x2,5 | 30 | 20 | 23 | 24 | 166 | 22 | 37 | 99 | 235 | 8,5 | 136 | 1/4" | 58 | 99 | 14 | 59 |

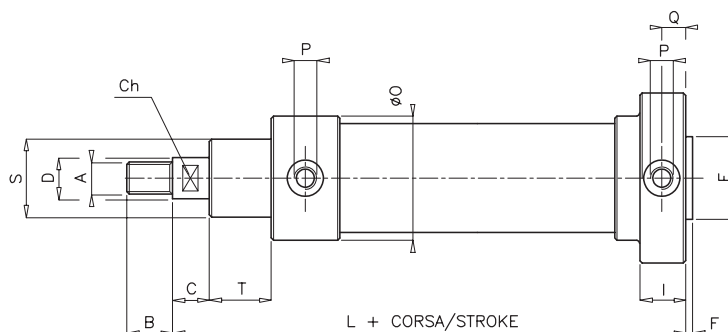
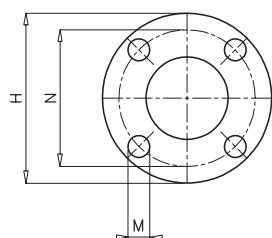
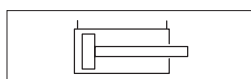
Cilindri con fissaggi integrati

Integrated fixing cylinders



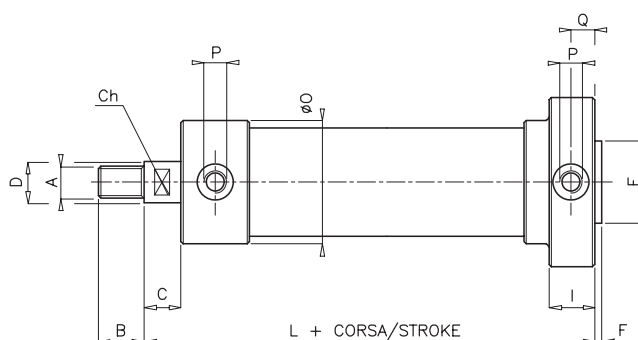
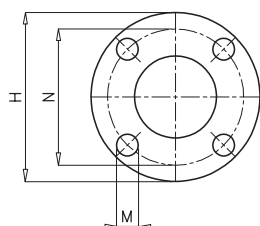
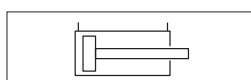
SERIE 300

diottalevi



FISSAGGIO FLANGIA POSTERIORE codice. **304.00** Ø.corsa
REAR FLANGE FIXING code. **304.00** Ø.stroke

| ALESAGGIO BORE | A | B | Ch | C | D | E | F | H | I | L | M | N | ØO | P | Q | S | T |
|-------------------|-----------|----|----|----|----|----|---|-----|----|-----|------|-----|-----|------|------|----|----|
| 20 | M 6x1 | 9 | 6 | 8 | 8 | 23 | 2 | 50 | 18 | 78 | 4,5 | 39 | 30 | 1/8" | 9 | 24 | 16 |
| 27 | M 8x1,25 | 12 | 8 | 10 | 10 | 30 | 2 | 60 | 19 | 89 | 4,5 | 48 | 35 | 1/8" | 9,5 | 28 | 20 |
| 35 | M 10x1,5 | 15 | 10 | 12 | 12 | 38 | 2 | 70 | 19 | 97 | 5,5 | 59 | 45 | 1/8" | 9,5 | 32 | 24 |
| 40 | M 10x1,5 | 15 | 10 | 12 | 12 | 40 | 3 | 75 | 21 | 109 | 5,5 | 62 | 50 | 1/8" | 10,5 | 36 | 32 |
| 50 | M 12x1,75 | 18 | 12 | 15 | 14 | 50 | 3 | 90 | 23 | 115 | 6,5 | 75 | 63 | 1/8" | 11,5 | 40 | 32 |
| 60 | M 14x2 | 21 | 15 | 17 | 18 | 62 | 3 | 100 | 26 | 126 | 8,5 | 86 | 73 | 1/4" | 13 | 45 | 32 |
| 70 | M 16x2 | 24 | 17 | 18 | 20 | 72 | 4 | 120 | 27 | 130 | 8,5 | 100 | 84 | 1/4" | 13,5 | 50 | 35 |
| 85 | M 18x2,5 | 27 | 19 | 20 | 22 | 80 | 4 | 140 | 28 | 147 | 10,5 | 120 | 100 | 1/4" | 14 | 60 | 45 |
| 100 | M 20x2,5 | 30 | 20 | 23 | 24 | 88 | 4 | 160 | 28 | 161 | 10,5 | 137 | 116 | 1/4" | 14 | 70 | 50 |



Solo a doppio effetto
 Only double-acting

FISSAGGIO FLANGIA POSTERIORE serie ridotta codice. **304.04** Ø.corsa
REAR FLANGE FIXING reduced series code. **304.04** Ø.stroke

| ALESAGGIO BORE | A | B | Ch | C | D | E | F | H | I | L | M | N | ØO | P | Q |
|-------------------|-----------|----|----|----|----|----|---|-----|----|-----|------|-----|-----|------|------|
| 20 | M 6x1 | 9 | 6 | 8 | 8 | 23 | 2 | 50 | 18 | 65 | 4,5 | 39 | 30 | 1/8" | 9 |
| 27 | M 8x1,25 | 12 | 8 | 8 | 10 | 30 | 2 | 60 | 19 | 69 | 4,5 | 48 | 35 | 1/8" | 9,5 |
| 35 | M 10x1,5 | 15 | 10 | 11 | 12 | 38 | 2 | 70 | 19 | 74 | 5,5 | 59 | 45 | 1/8" | 9,5 |
| 40 | M 10x1,5 | 15 | 10 | 12 | 12 | 40 | 3 | 75 | 21 | 77 | 5,5 | 62 | 50 | 1/8" | 10,5 |
| 50 | M 12x1,75 | 18 | 12 | 14 | 14 | 50 | 3 | 90 | 23 | 85 | 6,5 | 75 | 63 | 1/8" | 11,5 |
| 60 | M 14x2 | 21 | 15 | 17 | 18 | 62 | 3 | 100 | 26 | 96 | 8,5 | 86 | 73 | 1/4" | 13 |
| 70 | M 16x2 | 24 | 17 | 16 | 20 | 72 | 4 | 120 | 27 | 100 | 8,5 | 100 | 84 | 1/4" | 13,5 |
| 85 | M 18x2,5 | 27 | 19 | 19 | 22 | 80 | 4 | 140 | 28 | 107 | 10,5 | 120 | 100 | 1/4" | 14 |
| 100 | M 20x2,5 | 30 | 20 | 20 | 24 | 88 | 4 | 160 | 28 | 111 | 10,5 | 137 | 116 | 1/4" | 14 |

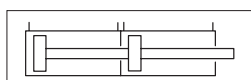


MOLTIPLICATORI DI FORZA

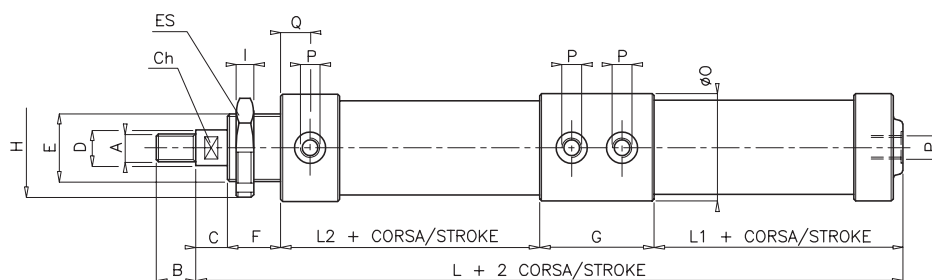
I cilindri tandem o moltiplicatori di forza a due o più camere di spinta trovano applicazione quando si rende necessario aumentare la forza di spinta senza potere aumentare l'alesaggio del cilindro.

FORCE MULTIPLIERS

Tandem cylinders or force multipliers with two or more thrust chambers are used when it is necessary to increase the force of the thrust without having to increase the bore of the cylinder.



MOLTIPLICATORE DI FORZA FORCE MULTIPLIER



CILINDRO TENDEM* fissaggio vite anteriore codice. **300.20** Ø.corsa
TANDEM CYLINDER* front screw fixing code. **300.20** Ø.stroke

| ALESAGGIO BORE | A | B | Ch | C | D | E | F | G | H | ES | I | L | L1 | L2 | ØO | P | Q |
|-------------------|-----------|----|----|----|----|--------|----|----|----|----|----|-----|----|----|-----|------|----|
| 20 | M 6x1 | 9 | 6 | 8 | 8 | 24x2 | 16 | 64 | - | 32 | 5 | 140 | 22 | 30 | 30 | 1/8" | 9 |
| 27 | M 8x1,25 | 12 | 8 | 10 | 10 | 28x2 | 20 | 70 | - | 36 | 6 | 156 | 20 | 36 | 35 | 1/8" | 10 |
| 35 | M 10x1,5 | 15 | 10 | 12 | 12 | 32x2 | 24 | 64 | - | 40 | 7 | 163 | 25 | 38 | 45 | 1/8" | 10 |
| 40 | M 10x1,5 | 15 | 10 | 12 | 12 | 36x2 | 32 | 64 | - | 46 | 8 | 169 | 25 | 36 | 50 | 1/8" | 11 |
| 50 | M 12x1,75 | 18 | 12 | 15 | 14 | 40x1,5 | 32 | 74 | 58 | - | 9 | 184 | 28 | 35 | 63 | 1/8" | 11 |
| 60 | M 14x2 | 21 | 15 | 17 | 18 | 45x1,5 | 32 | 82 | 65 | - | 10 | 199 | 28 | 40 | 73 | 1/4" | 13 |
| 70 | M 16x2 | 24 | 17 | 18 | 20 | 50x1,5 | 35 | 86 | 70 | - | 11 | 207 | 30 | 38 | 84 | 1/4" | 12 |
| 85 | M 18x2,5 | 27 | 19 | 20 | 22 | 60x2 | 45 | 91 | 80 | - | 11 | 234 | 36 | 42 | 100 | 1/4" | 13 |
| 100 | M 20x2,5 | 30 | 20 | 23 | 24 | 70x2 | 50 | 96 | 92 | - | 12 | 255 | 39 | 47 | 116 | 1/4" | 14 |

*A richiesta ulteriori camere di spinta / Further thrust chambers available on request

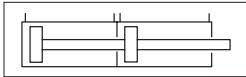
Cilindri con fissaggi integrati

Integrated fixing cylinders



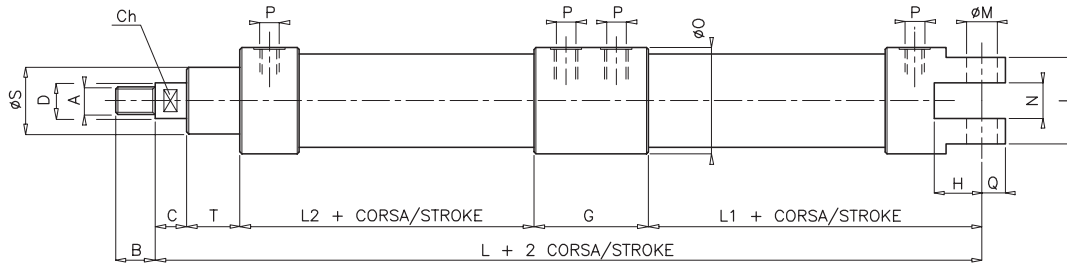
SERIE 300

diottalevi



MOLTIPLICATORE DI FORZA

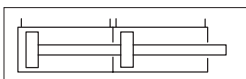
FORCE MULTIPLIER



CILINDRO TANDEM* fissaggio cerniera posteriore codice. **301.20** Ø.corsa
TANDEM CYLINDER* rear bracket fixing code. **301.20** Ø.stroke

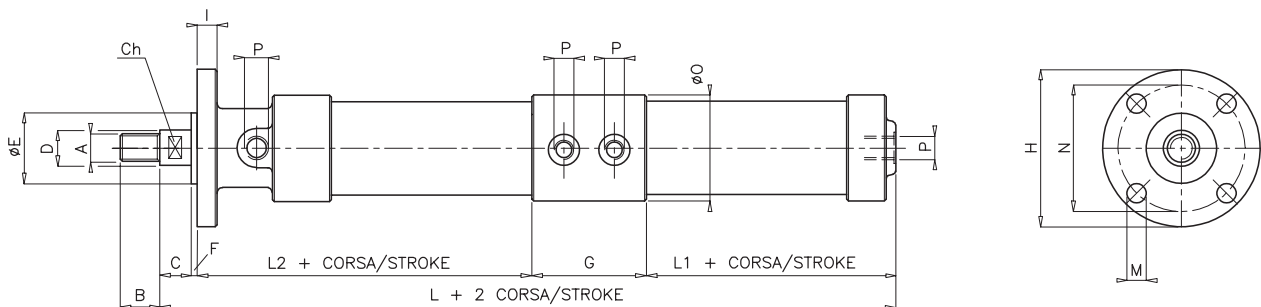
| ALESAGGIO BORE | A | B | Ch | C | D | G | H | I | L | L1 | L2 | ØM | N | ØO | P | Q | ØS | T |
|-------------------|-----------|----|----|----|----|----|----|----|-----|----|----|----|----|-----|------|----|----|----|
| 20 | M 6x1 | 9 | 6 | 8 | 8 | 64 | 10 | 22 | 156 | 38 | 30 | 5 | 8 | 30 | 1/8" | 6 | 24 | 16 |
| 27 | M 8x1,25 | 12 | 8 | 10 | 10 | 70 | 18 | 25 | 173 | 37 | 36 | 6 | 9 | 35 | 1/8" | 7 | 28 | 20 |
| 35 | M 10x1,5 | 15 | 10 | 12 | 12 | 64 | 22 | 32 | 181 | 43 | 38 | 8 | 12 | 45 | 1/8" | 9 | 32 | 24 |
| 40 | M 10x1,5 | 15 | 10 | 12 | 12 | 64 | 23 | 40 | 190 | 46 | 36 | 10 | 18 | 50 | 1/8" | 10 | 36 | 32 |
| 50 | M 12x1,75 | 18 | 12 | 15 | 14 | 74 | 27 | 50 | 207 | 51 | 35 | 12 | 25 | 63 | 1/8" | 13 | 40 | 32 |
| 60 | M 14x2 | 21 | 15 | 17 | 18 | 82 | 28 | 58 | 224 | 53 | 40 | 14 | 26 | 73 | 1/4" | 15 | 45 | 32 |
| 70 | M 16x2 | 24 | 17 | 18 | 20 | 86 | 35 | 71 | 240 | 63 | 38 | 16 | 35 | 84 | 1/4" | 16 | 50 | 35 |
| 85 | M 18x2,5 | 27 | 19 | 20 | 22 | 91 | 35 | 77 | 263 | 65 | 42 | 18 | 40 | 100 | 1/4" | 18 | 60 | 45 |
| 100 | M 20x2,5 | 30 | 20 | 23 | 24 | 96 | 44 | 81 | 293 | 77 | 47 | 20 | 40 | 116 | 1/4" | 21 | 70 | 50 |

*A richiesta ulteriori camere di spinta / Further thrust chambers available on request



MOLTIPLICATORE DI FORZA

FORCE MULTIPLIER



CILINDRO TANDEM* fissaggio flangia anteriore codice. **302.20** Ø.corsa
TANDEM CYLINDER* front flange fixing code. **302.20** Ø.stroke

| ALESAGGIO BORE | A | B | Ch | C | D | E | F | G | H | I | L | L1 | L2 | M | N | ØO | P |
|-------------------|-----------|----|----|----|----|----|---|----|-----|----|-----|----|----|------|-----|-----|------|
| 20 | M 6x1 | 9 | 6 | 8 | 8 | 23 | 2 | 64 | 50 | 4 | 140 | 22 | 44 | 4,5 | 39 | 30 | 1/8" |
| 27 | M 8x1,25 | 12 | 8 | 10 | 10 | 30 | 2 | 70 | 58 | 5 | 156 | 20 | 54 | 4,5 | 48 | 35 | 1/8" |
| 35 | M 10x1,5 | 15 | 10 | 12 | 12 | 36 | 2 | 64 | 65 | 6 | 163 | 25 | 60 | 5,5 | 54 | 45 | 1/8" |
| 40 | M 10x1,5 | 15 | 10 | 12 | 12 | 40 | 3 | 64 | 70 | 7 | 169 | 25 | 65 | 6,5 | 57 | 50 | 1/8" |
| 50 | M 12x1,75 | 18 | 12 | 15 | 14 | 54 | 4 | 74 | 87 | 8 | 184 | 28 | 63 | 6,5 | 75 | 63 | 1/8" |
| 60 | M 14x2 | 21 | 15 | 17 | 18 | 60 | 4 | 82 | 100 | 8 | 199 | 28 | 68 | 6,5 | 82 | 73 | 1/4" |
| 70 | M 16x2 | 24 | 17 | 18 | 20 | 70 | 4 | 86 | 119 | 10 | 207 | 30 | 69 | 8,5 | 100 | 84 | 1/4" |
| 85 | M 18x2,5 | 27 | 19 | 20 | 22 | 80 | 4 | 91 | 140 | 11 | 234 | 36 | 83 | 10,5 | 120 | 100 | 1/4" |
| 100 | M 20x2,5 | 30 | 20 | 23 | 24 | 88 | 4 | 96 | 160 | 12 | 255 | 39 | 93 | 10,5 | 137 | 116 | 1/4" |

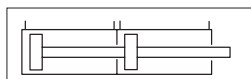
*A richiesta ulteriori camere di spinta / Further thrust chambers available on request

SERIE 300

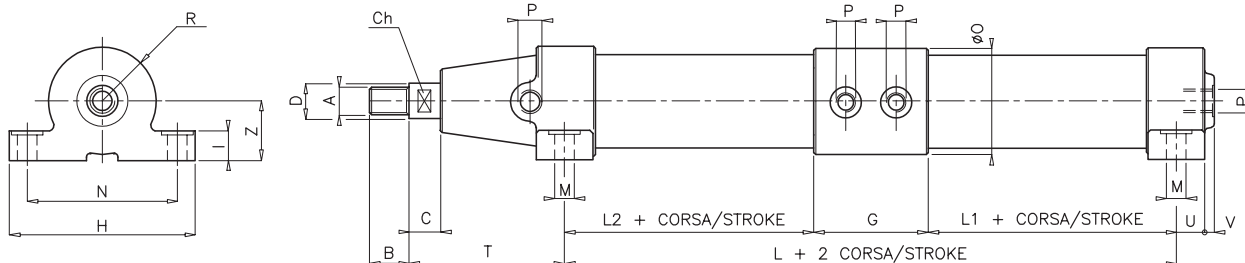
diottalevi



Cilindri con fissaggi integrati Integrated fixing cylinders



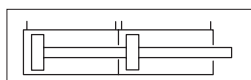
MOLTIPLICATORE DI FORZA FORCE MULTIPLIER



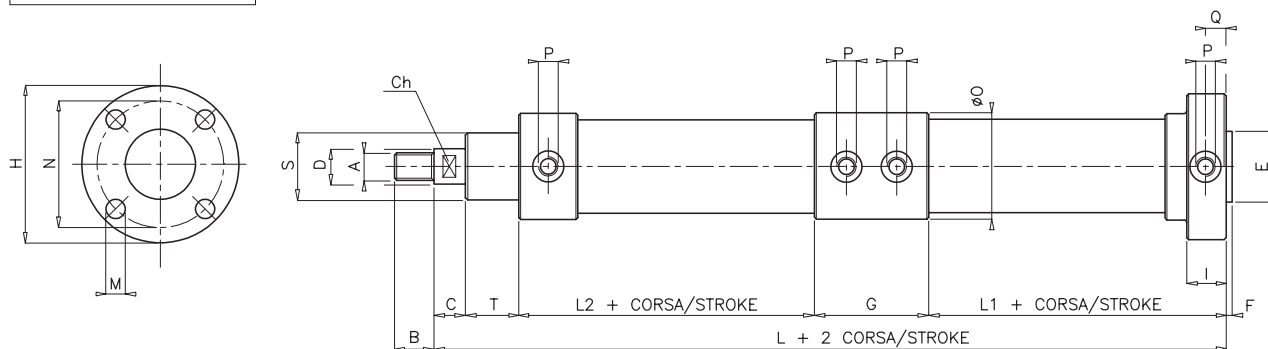
CILINDRO TANDEM* fissaggio a piedini codice. **303.20** Ø.corsa
TANDEM CYLINDER* feet fixing code. **303.20** Ø.stroke

| ALESAGGIO BORE | A | B | Ch | C | D | G | H | I | L | L1 | L2 | M | N | ØO | P | R | T | U | V | Z |
|-------------------|-----------|----|----|----|----|----|-----|----|-----|----|----|-----|-----|-----|------|----|------|-----|---|----|
| 27 | M 8x1,25 | 12 | 8 | 10 | 10 | 70 | 55 | 10 | 97 | 11 | 16 | 4,5 | 45 | 35 | 1/8" | 18 | 50 | 13 | - | 19 |
| 35 | M 10x1,5 | 15 | 10 | 12 | 12 | 64 | 77 | 12 | 99 | 15 | 20 | 5,5 | 59 | 45 | 1/8" | 23 | 54 | 9 | 3 | 24 |
| 40 | M 10x1,5 | 15 | 10 | 12 | 12 | 64 | 86 | 13 | 93 | 14 | 15 | 5,5 | 65 | 50 | 1/8" | 25 | 65,5 | 9,5 | 3 | 27 |
| 50 | M 12x1,75 | 18 | 12 | 15 | 14 | 74 | 97 | 16 | 98 | 12 | 12 | 5,5 | 78 | 63 | 1/8" | 32 | 70 | 11 | 5 | 31 |
| 60 | M 14x2 | 21 | 15 | 17 | 18 | 82 | 110 | 17 | 110 | 14 | 14 | 6,5 | 90 | 73 | 1/4" | 37 | 75 | 13 | 6 | 39 |
| 70 | M 16x2 | 24 | 17 | 18 | 20 | 86 | 125 | 18 | 114 | 14 | 14 | 8,5 | 100 | 84 | 1/4" | 42 | 77 | 13 | 6 | 44 |
| 85 | M 18x2,5 | 27 | 19 | 20 | 22 | 91 | 147 | 20 | 131 | 20 | 20 | 8,5 | 120 | 100 | 1/4" | 50 | 87 | 14 | 6 | 51 |
| 100 | M 20x2,5 | 30 | 20 | 23 | 24 | 96 | 166 | 22 | 138 | 21 | 21 | 8,5 | 136 | 116 | 1/4" | 58 | 99 | 14 | 6 | 59 |

*A richiesta ulteriori camere di spinta / Further thrust chambers available on request



MOLTIPLICATORE DI FORZA FORCE MULTIPLIER



CILINDRO TANDEM* fissaggio flangia posteriore codice. **304.20** Ø.corsa
TANDEM CYLINDER* rear flange fixing code. **304.20** Ø.stroke

| ALESAGGIO BORE | A | B | Ch | C | D | E | F | G | H | I | L | L1 | L2 | M | N | ØO | P | Q | S | T |
|-------------------|-----------|----|----|----|----|----|---|----|-----|----|-----|----|----|------|-----|-----|------|------|----|----|
| 20 | M 6x1 | 9 | 6 | 8 | 8 | 23 | 2 | 64 | 50 | 18 | 149 | 31 | 30 | 4,5 | 39 | 30 | 1/8" | 9 | 24 | 16 |
| 27 | M 8x1,25 | 12 | 8 | 10 | 10 | 30 | 2 | 70 | 60 | 19 | 167 | 31 | 36 | 4,5 | 48 | 35 | 1/8" | 9,5 | 28 | 20 |
| 35 | M 10x1,5 | 15 | 10 | 12 | 12 | 38 | 2 | 64 | 70 | 19 | 171 | 33 | 38 | 5,5 | 59 | 45 | 1/8" | 9,5 | 32 | 24 |
| 40 | M 10x1,5 | 15 | 10 | 12 | 12 | 40 | 3 | 64 | 75 | 21 | 177 | 33 | 36 | 5,5 | 62 | 50 | 1/8" | 10,5 | 36 | 32 |
| 50 | M 12x1,75 | 18 | 12 | 15 | 14 | 50 | 3 | 74 | 90 | 23 | 191 | 35 | 35 | 6,5 | 75 | 63 | 1/8" | 11,5 | 40 | 32 |
| 60 | M 14x2 | 21 | 15 | 17 | 18 | 62 | 3 | 82 | 100 | 26 | 210 | 39 | 40 | 8,5 | 86 | 73 | 1/4" | 13 | 45 | 32 |
| 70 | M 16x2 | 24 | 17 | 18 | 20 | 72 | 4 | 86 | 120 | 27 | 218 | 41 | 38 | 8,5 | 100 | 84 | 1/4" | 13,5 | 50 | 35 |
| 85 | M 18x2,5 | 27 | 19 | 20 | 22 | 80 | 4 | 91 | 140 | 28 | 242 | 44 | 42 | 10,5 | 120 | 100 | 1/4" | 14 | 60 | 45 |
| 100 | M 20x2,5 | 30 | 20 | 23 | 24 | 88 | 4 | 96 | 160 | 28 | 262 | 46 | 47 | 10,5 | 137 | 116 | 1/4" | 14 | 70 | 50 |

*A richiesta ulteriori camere di spinta / Further thrust chambers available on request

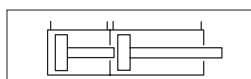
Cilindri con fissaggi integrati

Integrated fixing cylinders



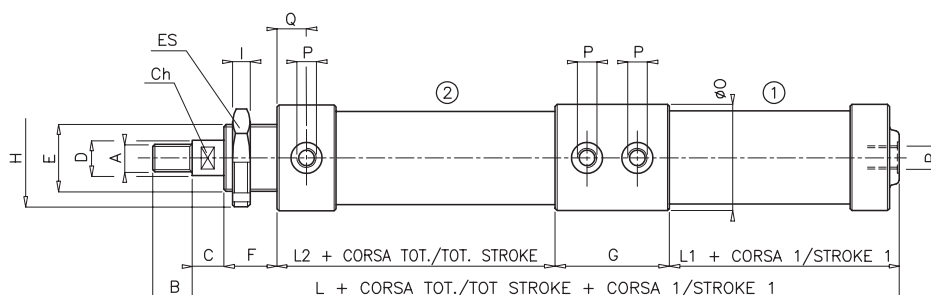
SERIE 300

diottalevi



STAZIONI MULTIPLE

MULTIPLE STATION

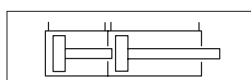


CILINDRO DOPPIA STAZIONE* fissaggio vite anteriore codice. **300.30** Ø.corsa totale**
DOUBLE STATION CYLINDER* front screw fixing code. **300.30** Ø.total stroke**

| ALESAGGIO BORE | A | B | Ch | C | D | E | F | G | H | ES | I | L | L1 | L2 | ØO | P | Q |
|----------------|-----------|----|----|----|----|--------|----|----|----|----|----|-----|----|----|-----|------|----|
| 20 | M 6x1 | 9 | 6 | 8 | 8 | 24x2 | 16 | 64 | - | 32 | 5 | 145 | 22 | 35 | 30 | 1/8" | 9 |
| 27 | M 8x1,25 | 12 | 8 | 10 | 10 | 28x2 | 20 | 70 | - | 36 | 6 | 156 | 20 | 36 | 35 | 1/8" | 10 |
| 35 | M 10x1,5 | 15 | 10 | 12 | 12 | 32x2 | 24 | 64 | - | 40 | 7 | 163 | 25 | 38 | 45 | 1/8" | 10 |
| 40 | M 10x1,5 | 15 | 10 | 12 | 12 | 36x2 | 32 | 64 | - | 46 | 8 | 174 | 25 | 41 | 50 | 1/8" | 11 |
| 50 | M 12x1,75 | 18 | 12 | 15 | 14 | 40x1,5 | 32 | 74 | 58 | - | 9 | 189 | 28 | 40 | 63 | 1/8" | 11 |
| 60 | M 14x2 | 21 | 15 | 17 | 18 | 45x1,5 | 32 | 82 | 65 | - | 10 | 204 | 28 | 45 | 73 | 1/4" | 13 |
| 70 | M 16x2 | 24 | 17 | 18 | 20 | 50x1,5 | 35 | 86 | 70 | - | 11 | 212 | 30 | 43 | 84 | 1/4" | 12 |
| 85 | M 18x2,5 | 27 | 19 | 20 | 22 | 60x2 | 45 | 91 | 80 | - | 11 | 239 | 36 | 47 | 100 | 1/4" | 13 |
| 100 | M 20x2,5 | 30 | 20 | 23 | 24 | 70x2 | 50 | 96 | 92 | - | 12 | 260 | 39 | 52 | 116 | 1/4" | 14 |

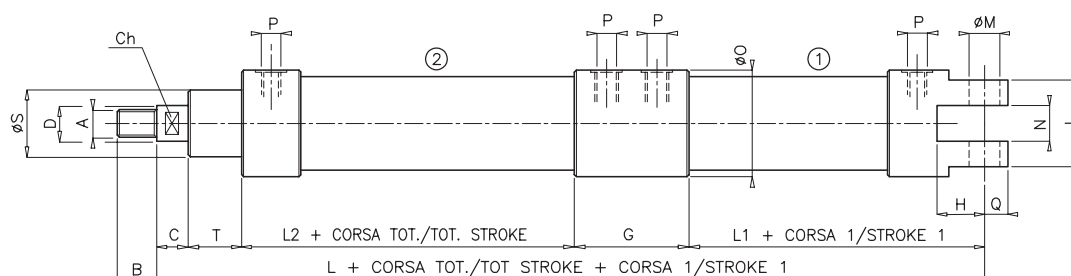
* A richiesta ulteriori stazioni / Further stations on request

** In fase di ordinazione indicare anche la corsa della 1ª stazione / When ordering also indicate the 1st station stroke



STAZIONI MULTIPLE

MULTIPLE STATION



CILINDRO DOPPIA STAZIONE* fissaggio cerniera posteriore codice. **301.30** Ø.corsa totale**
DOUBLE STATION CYLINDER* rear bracket fixing code. **301.30** Ø.total stroke**

| ALESAGGIO BORE | A | B | Ch | C | D | G | H | I | L | L1 | L2 | ØM | N | ØO | P | Q | ØS | T |
|----------------|-----------|----|----|----|----|----|----|----|-----|----|----|----|----|-----|------|----|----|----|
| 20 | M 6x1 | 9 | 6 | 8 | 8 | 64 | 10 | 22 | 161 | 38 | 35 | 5 | 8 | 30 | 1/8" | 6 | 24 | 16 |
| 27 | M 8x1,25 | 12 | 8 | 10 | 10 | 70 | 18 | 25 | 173 | 37 | 36 | 6 | 9 | 35 | 1/8" | 7 | 28 | 20 |
| 35 | M 10x1,5 | 15 | 10 | 12 | 12 | 64 | 22 | 32 | 181 | 43 | 38 | 8 | 12 | 45 | 1/8" | 9 | 32 | 24 |
| 40 | M 10x1,5 | 15 | 10 | 12 | 12 | 64 | 23 | 40 | 195 | 46 | 41 | 10 | 18 | 50 | 1/8" | 10 | 36 | 32 |
| 50 | M 12x1,75 | 18 | 12 | 15 | 14 | 74 | 27 | 50 | 211 | 51 | 40 | 12 | 25 | 63 | 1/8" | 13 | 40 | 32 |
| 60 | M 14x2 | 21 | 15 | 17 | 18 | 82 | 28 | 58 | 229 | 53 | 45 | 14 | 26 | 73 | 1/4" | 15 | 45 | 32 |
| 70 | M 16x2 | 24 | 17 | 18 | 20 | 86 | 35 | 71 | 245 | 63 | 43 | 16 | 35 | 84 | 1/4" | 16 | 50 | 35 |
| 85 | M 18x2,5 | 27 | 19 | 20 | 22 | 91 | 35 | 77 | 268 | 65 | 47 | 18 | 40 | 100 | 1/4" | 18 | 60 | 45 |
| 100 | M 20x2,5 | 30 | 20 | 23 | 24 | 96 | 44 | 81 | 298 | 77 | 52 | 20 | 40 | 116 | 1/4" | 21 | 70 | 50 |

* A richiesta ulteriori stazioni / Further stations on request

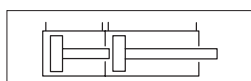
** In fase di ordinazione indicare anche la corsa della 1ª stazione / When ordering also indicate the 1st station stroke

SERIE 300

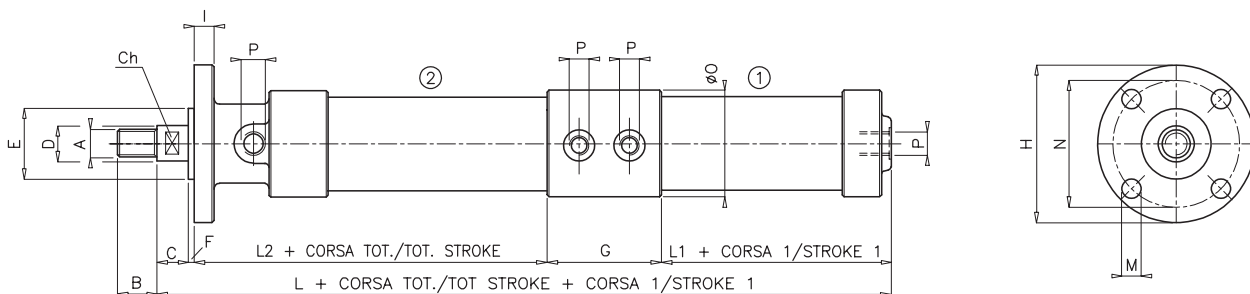


Cilindri con fissaggi integrati Integrated fixing cylinders

diottalevi



STAZIONI MULTIPLE MULTIPLE STATIONS

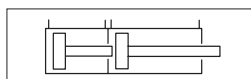


CILINDRO DOPPIA STAZIONE* fissaggio flangia anteriore codice. **302.30** Ø.corsa totale**
DOUBLE STATION CYLINDER* front flange fixing code. **302.30** Ø.total stroke**

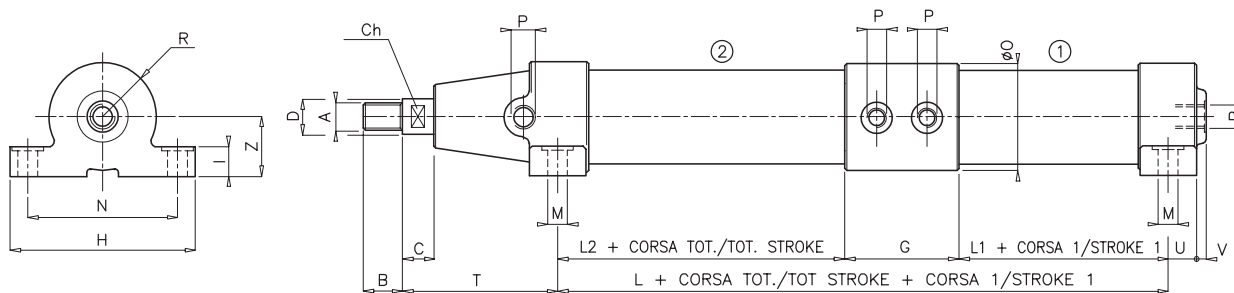
| ALESAGGIO BORE | A | B | Ch | C | D | E | F | G | H | I | L | L1 | L2 | M | N | ØO | P |
|-------------------|-----------|----|----|----|----|----|---|----|-----|----|-----|----|----|------|-----|-----|------|
| 20 | M 6x1 | 9 | 6 | 8 | 8 | 23 | 2 | 64 | 50 | 4 | 145 | 22 | 49 | 4,5 | 39 | 30 | 1/8" |
| 27 | M 8x1,25 | 12 | 8 | 10 | 10 | 30 | 2 | 70 | 58 | 5 | 156 | 20 | 54 | 4,5 | 48 | 35 | 1/8" |
| 35 | M 10x1,5 | 15 | 10 | 12 | 12 | 36 | 2 | 64 | 65 | 6 | 163 | 25 | 60 | 5,5 | 54 | 45 | 1/8" |
| 40 | M 10x1,5 | 15 | 10 | 12 | 12 | 40 | 3 | 64 | 70 | 7 | 174 | 25 | 70 | 6,5 | 57 | 50 | 1/8" |
| 50 | M 12x1,75 | 18 | 12 | 15 | 14 | 54 | 4 | 74 | 87 | 8 | 189 | 28 | 68 | 6,5 | 75 | 63 | 1/8" |
| 60 | M 14x2 | 21 | 15 | 17 | 18 | 60 | 4 | 82 | 100 | 8 | 204 | 28 | 73 | 6,5 | 82 | 73 | 1/4" |
| 70 | M 16x2 | 24 | 17 | 18 | 20 | 70 | 4 | 86 | 119 | 10 | 212 | 30 | 74 | 8,5 | 100 | 84 | 1/4" |
| 85 | M 18x2,5 | 27 | 19 | 20 | 22 | 80 | 4 | 91 | 140 | 11 | 239 | 36 | 88 | 10,5 | 120 | 100 | 1/4" |
| 100 | M 20x2,5 | 30 | 20 | 23 | 24 | 88 | 4 | 96 | 160 | 12 | 260 | 39 | 98 | 10,5 | 137 | 116 | 1/4" |

* A richiesta ulteriori stazioni / Further stations on request

** In fase di ordinazione indicare anche la corsa della 1ª stazione / When ordering also indicate the 1st station stroke



STAZIONI MULTIPLE MULTIPLE STATIONS



CILINDRO DOPPIA STAZIONE* fissaggio a piedini codice. **303.30** Ø.corsa totale**
DOUBLE STATION CYLINDER* foot fixing code. **303.30** Ø.total stroke**

| ALESAGGIO BORE | A | B | Ch | C | D | G | H | I | L | L1 | L2 | M | N | ØO | P | R | T | U | V | Z |
|-------------------|-----------|----|----|----|----|----|-----|----|-----|----|----|-----|-----|-----|------|----|------|-----|---|----|
| 27 | M 8x1,25 | 12 | 8 | 10 | 10 | 70 | 55 | 10 | 97 | 11 | 16 | 4,5 | 45 | 35 | 1/8" | 18 | 50 | 13 | - | 19 |
| 35 | M 10x1,5 | 15 | 10 | 12 | 12 | 64 | 77 | 12 | 99 | 15 | 20 | 5,5 | 59 | 45 | 1/8" | 23 | 54 | 9 | 3 | 24 |
| 40 | M 10x1,5 | 15 | 10 | 12 | 12 | 64 | 86 | 13 | 98 | 14 | 20 | 5,5 | 65 | 50 | 1/8" | 25 | 65,5 | 9,5 | 3 | 27 |
| 50 | M 12x1,75 | 18 | 12 | 15 | 15 | 74 | 97 | 16 | 103 | 12 | 17 | 5,5 | 78 | 63 | 1/8" | 32 | 70 | 11 | 5 | 31 |
| 60 | M 14x2 | 21 | 15 | 17 | 18 | 82 | 110 | 17 | 115 | 14 | 19 | 6,5 | 90 | 73 | 1/4" | 37 | 75 | 13 | 6 | 39 |
| 70 | M 16x2 | 24 | 17 | 18 | 20 | 86 | 125 | 18 | 119 | 14 | 19 | 8,5 | 100 | 84 | 1/4" | 42 | 77 | 13 | 6 | 44 |
| 85 | M 18x2,5 | 27 | 19 | 20 | 22 | 91 | 147 | 20 | 136 | 20 | 25 | 8,5 | 120 | 100 | 1/4" | 50 | 87 | 14 | 6 | 51 |
| 100 | M 20x2,5 | 30 | 20 | 23 | 24 | 96 | 166 | 22 | 143 | 21 | 26 | 8,5 | 136 | 116 | 1/4" | 58 | 99 | 14 | 6 | 59 |

* A richiesta ulteriori stazioni / Further stations on request

** In fase di ordinazione indicare anche la corsa della 1ª stazione / When ordering also indicate the 1st station stroke

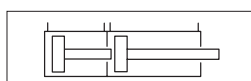
Cilindri con fissaggi integrati

Integrated fixing cylinders



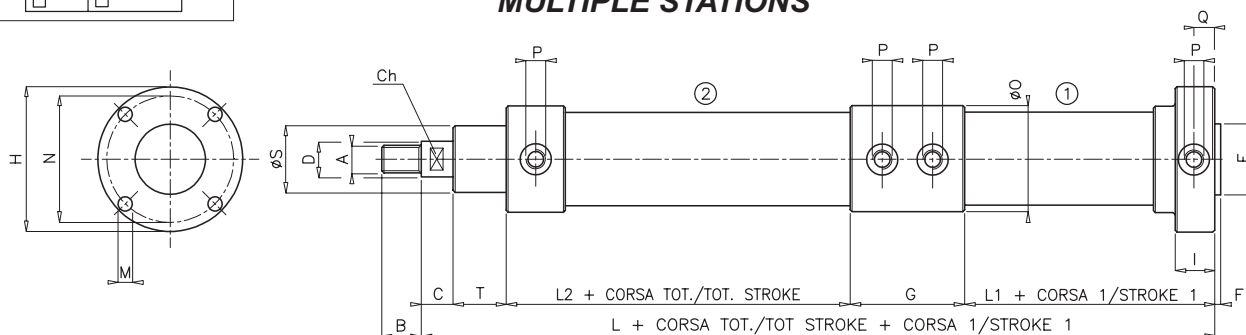
SERIE 300

diottalevi



STAZIONI MULTIPLE

MULTIPLE STATIONS

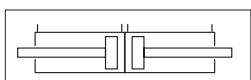


CILINDRO DOPPIA STAZIONE* fissaggio flangia posteriore codice. **304.30** Ø.corsa totale**
DOUBLE STATION CYLINDER* rear flange fixing code. **304.30** Ø.total stroke**

| ALESAGGIO BORE | A | B | Ch | C | D | E | F | G | H | I | L | L1 | L2 | M | N | ØO | P | Q | ØS | T |
|-------------------|-----------|----|----|----|----|----|---|----|-----|----|-----|----|----|------|-----|-----|------|------|----|----|
| 20 | M 6x1 | 9 | 6 | 8 | 8 | 23 | 2 | 64 | 50 | 18 | 154 | 31 | 35 | 4,5 | 39 | 30 | 1/8" | 9 | 24 | 16 |
| 27 | M 8x1,25 | 12 | 8 | 10 | 10 | 30 | 2 | 70 | 60 | 19 | 167 | 31 | 36 | 4,5 | 48 | 35 | 1/8" | 9,5 | 28 | 20 |
| 35 | M 10x1,5 | 15 | 10 | 12 | 12 | 38 | 2 | 64 | 70 | 19 | 171 | 33 | 38 | 5,5 | 59 | 45 | 1/8" | 9,5 | 32 | 24 |
| 40 | M 10x1,5 | 15 | 10 | 12 | 12 | 40 | 3 | 64 | 75 | 21 | 182 | 33 | 41 | 5,5 | 62 | 50 | 1/8" | 10,5 | 36 | 32 |
| 50 | M 12x1,75 | 18 | 12 | 15 | 14 | 50 | 3 | 74 | 90 | 23 | 196 | 35 | 40 | 6,5 | 75 | 63 | 1/8" | 11,5 | 40 | 32 |
| 60 | M 14x2 | 21 | 15 | 17 | 18 | 62 | 3 | 82 | 100 | 26 | 215 | 39 | 45 | 8,5 | 86 | 73 | 1/4" | 13 | 45 | 32 |
| 70 | M 16x2 | 24 | 17 | 18 | 20 | 72 | 4 | 86 | 120 | 27 | 223 | 41 | 43 | 8,5 | 100 | 84 | 1/4" | 13,5 | 50 | 35 |
| 85 | M 18x2,5 | 27 | 19 | 20 | 22 | 80 | 4 | 91 | 140 | 28 | 247 | 44 | 47 | 10,5 | 120 | 100 | 1/4" | 14 | 60 | 45 |
| 100 | M 20x2,5 | 30 | 20 | 23 | 24 | 88 | 4 | 96 | 160 | 28 | 267 | 46 | 52 | 10,5 | 137 | 116 | 1/4" | 14 | 70 | 50 |

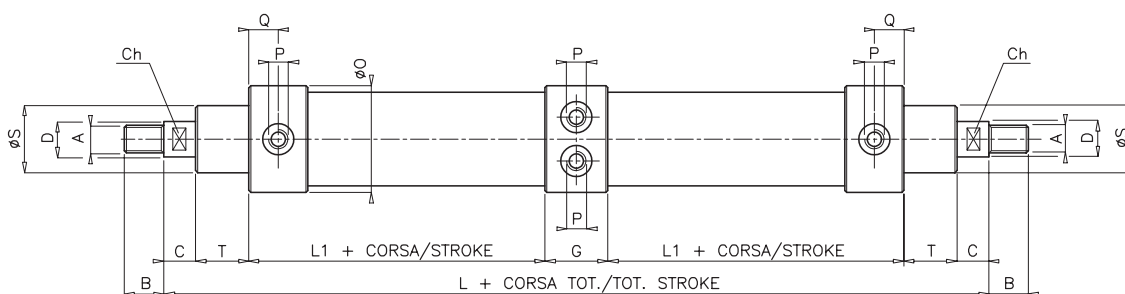
* A richiesta ulteriori stazioni / Further stations on request

** In fase di ordinazione indicare anche la corsa della 1ª stazione / When ordering also indicate the 1st station stroke



DOPPIO

DOUBLE



CILINDRO DOPPIO fissaggio su stelo codice. **305.40** Ø.corsa totale*
DOUBLE CYLINDER fixing on piston rod code. **305.40** Ø.total stroke*

| ALESAGGIO BORE | A | B | Ch | C | D | G | L | L1 | ØO | P | Q | ØS | T |
|-------------------|-----------|----|----|----|----|----|-----|----|-----|------|----|----|----|
| 20 | M 6x1 | 9 | 6 | 8 | 8 | 29 | 137 | 30 | 30 | 1/8" | 9 | 24 | 16 |
| 27 | M 8x1,25 | 12 | 8 | 10 | 10 | 35 | 157 | 31 | 35 | 1/8" | 10 | 28 | 20 |
| 35 | M 10x1,5 | 15 | 10 | 12 | 12 | 36 | 174 | 33 | 45 | 1/8" | 10 | 32 | 24 |
| 40 | M 10x1,5 | 15 | 10 | 12 | 12 | 36 | 196 | 36 | 50 | 1/8" | 11 | 36 | 32 |
| 50 | M 12x1,75 | 18 | 12 | 15 | 14 | 43 | 207 | 35 | 63 | 1/8" | 11 | 40 | 32 |
| 60 | M 14x2 | 21 | 15 | 17 | 18 | 46 | 224 | 40 | 73 | 1/4" | 13 | 45 | 32 |
| 70 | M 16x2 | 24 | 17 | 18 | 20 | 50 | 232 | 38 | 84 | 1/4" | 12 | 50 | 35 |
| 85 | M 18x2,5 | 27 | 19 | 20 | 22 | 52 | 266 | 42 | 100 | 1/4" | 13 | 60 | 45 |
| 100 | M 20x2,5 | 30 | 20 | 23 | 24 | 52 | 292 | 47 | 116 | 1/4" | 14 | 70 | 50 |

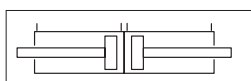
* In fase di ordinazione indicare sempre le due corse separatamente / When ordering always indicate the two strokes separately

SERIE 300

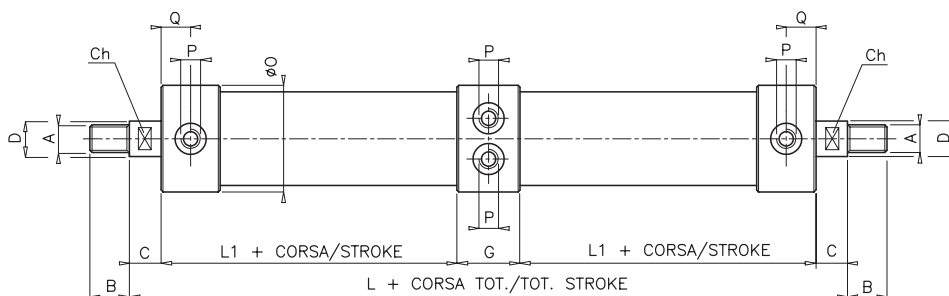
diottalevi



Cilindri con fissaggi integrati Integrated fixing cylinders



DOPPIO RIDOTTO DOUBLE REDUCED

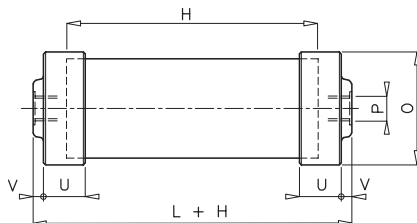
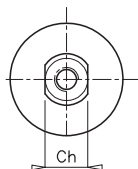
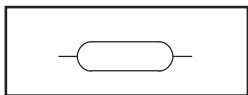


Solo a doppio effetto
Only double-acting

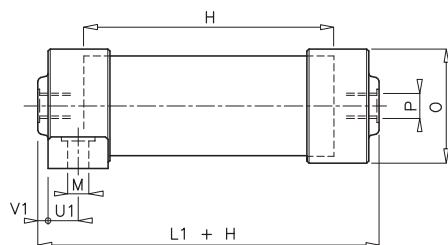
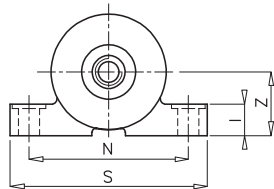
CILINDRO DOPPIO serie ridotta fissaggio su stelo codice. **305.44** Ø.corsa totale*
DOUBLE CYLINDER reduced series fixing on piston rod code. **305.44** Ø.total stroke*

| ALESAGGIO BORE | A | B | Ch | C | D | G | L | L1 | ØO | P | Q |
|-------------------|-----------|----|----|----|----|----|-----|----|-----|------|------|
| 20 | M 6x1 | 9 | 6 | 8 | 8 | 29 | 111 | 33 | 30 | 1/8" | 12 |
| 27 | M 8x1,25 | 12 | 8 | 8 | 10 | 35 | 117 | 33 | 35 | 1/8" | 13 |
| 35 | M 10x1,5 | 15 | 10 | 11 | 12 | 36 | 128 | 35 | 45 | 1/8" | 12 |
| 40 | M 10x1,5 | 15 | 10 | 12 | 12 | 36 | 132 | 36 | 50 | 1/8" | 11 |
| 50 | M 12x1,75 | 18 | 12 | 14 | 14 | 43 | 147 | 38 | 63 | 1/8" | 13,5 |
| 60 | M 14x2 | 21 | 15 | 17 | 18 | 46 | 164 | 42 | 73 | 1/4" | 15 |
| 70 | M 16x2 | 24 | 17 | 16 | 20 | 50 | 172 | 45 | 84 | 1/4" | 18 |
| 85 | M 18x2,5 | 27 | 19 | 19 | 22 | 52 | 188 | 49 | 100 | 1/4" | 20 |
| 100 | M 20x2,5 | 30 | 20 | 20 | 24 | 52 | 192 | 50 | 116 | 1/4" | 19 |

* In fase di ordinazione indicare sempre le due corse separatamente / When ordering always indicate the two strokes separately

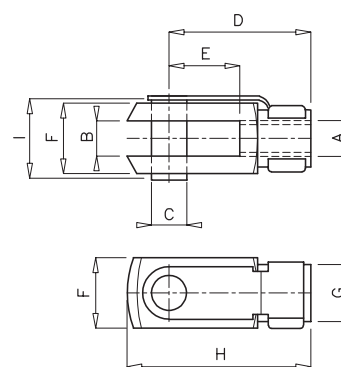
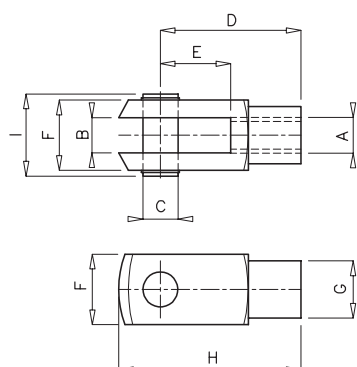


CAPACITA' A FONDELLI codice. **307.10** Ø .H
CAP CAPACITY code. **307.10** Ø .H



CAPACITA' A PIEDINO codice. **307.20** Ø .H
FOOT CAPACITY code. **307.20** Ø .H

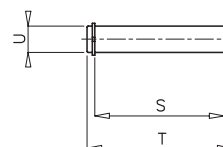
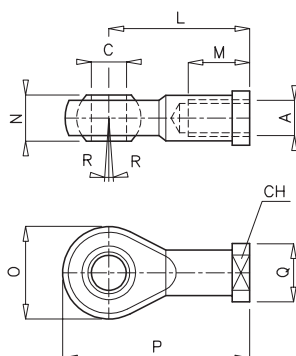
| ALESAGGIO BORE | Ch | I | L | L1 | M | N | O | P | S | U | U1 | V | V1 | Z | H min. | CAPACITA' l x cm di H CAPACITY l x cm of H |
|-------------------|----|----|----|----|-----|-----|-----|------|-----|------|-----|---|----|----|--------|---|
| 20 | 15 | - | 15 | - | - | - | 30 | 1/8" | - | 10,5 | - | 4 | - | - | 20 | 0,0031 |
| 27 | 17 | 10 | 14 | 18 | 4,5 | 45 | 35 | 1/8" | 55 | 13 | 13 | 4 | - | 19 | 25 | 0,0057 |
| 35 | 19 | 12 | 20 | 22 | 5,5 | 59 | 45 | 1/8" | 77 | 15 | 9 | 5 | 3 | 24 | 25 | 0,0096 |
| 40 | 22 | 13 | 22 | 24 | 5,5 | 65 | 50 | 1/8" | 86 | 16 | 9,5 | 5 | 3 | 27 | 25 | 0,0126 |
| 50 | 30 | 16 | 26 | 26 | 5,5 | 78 | 63 | 1/8" | 97 | 20 | 11 | 6 | 5 | 31 | 30 | 0,0196 |
| 60 | 30 | 17 | 24 | 29 | 6,5 | 90 | 73 | 1/4" | 110 | 21 | 13 | 5 | 6 | 39 | 30 | 0,0283 |
| 70 | 30 | 18 | 26 | 29 | 8,5 | 100 | 84 | 1/4" | 125 | 22 | 13 | 6 | 6 | 44 | 35 | 0,0385 |
| 85 | 40 | 20 | 34 | 38 | 8,5 | 120 | 100 | 1/4" | 147 | 24 | 14 | 8 | 6 | 51 | 35 | 0,0567 |
| 100 | 45 | 22 | 38 | 40 | 8,5 | 136 | 116 | 1/4" | 166 | 26 | 14 | 8 | 6 | 59 | 35 | 0,0785 |



ESCLUSI ALESAGGI 60 E 85
EXCLUDING BORES 60 AND 85

FORCELLA CON PERNO codice. **309.01** Ø .cilindro
FORK WITH PIN code. **309.01** Ø .cylinder

FORCELLA CON CLIPS codice. **309.02** Ø .cilindro
FORK WITH CLIPS code. **309.02** Ø .cylinder



SNODO SFERICO codice. **309.03** Ø .cilindro
BALL JOINT code. **309.03** Ø .cylinder

PERNO CERNIERA codice. **309.04** Ø .cilindro
BRACKET PIN code. **309.04** Ø .cylinder

RICAMBI
SPARES

Per tutte le serie di cilindri sono previsti **KIT DI GUARNIZIONI DI RICAMBIO** in gomma **NBR** e in **VITON** per alte temperature.
For all cylinder series are provided **SPARE SEAL KITS**. **NBR** rubber or **VITON** for high temperatures.

| ALESAGGIO BORE | A | B | C | CH | D | E | F | G | H | I | L | M | N | O | P | Q | R | S | T | U |
|-------------------|-----------|----|----|----|----|----|----|----|-----|----|----|----|----|----|------|----|-----|------|----|----|
| 20 | M 6x1 | 6 | 6 | 11 | 24 | 12 | 12 | 10 | 31 | 19 | 30 | 12 | 9 | 20 | 40 | 13 | 13° | 22,5 | 29 | 5 |
| 27 | M 8x1,25 | 8 | 8 | 14 | 32 | 16 | 16 | 14 | 42 | 23 | 36 | 16 | 12 | 24 | 48 | 16 | 14° | 25,5 | 32 | 6 |
| 35 | M 10x1,5 | 10 | 10 | 17 | 40 | 20 | 20 | 18 | 52 | 28 | 43 | 20 | 14 | 29 | 57,5 | 19 | 13° | 32,5 | 39 | 8 |
| 40 | M 10x1,5 | 10 | 10 | 17 | 40 | 20 | 20 | 18 | 52 | 28 | 43 | 20 | 14 | 29 | 57,5 | 19 | 13° | 40,5 | 47 | 10 |
| 50 | M 12x1,75 | 12 | 12 | 19 | 48 | 24 | 24 | 20 | 61 | 31 | 50 | 22 | 16 | 34 | 67 | 22 | 13° | 50,5 | 57 | 12 |
| 60 | M 14x2 | 14 | 14 | 22 | 56 | 27 | 27 | 24 | 72 | 35 | 57 | 25 | 19 | 38 | 76 | 25 | 16° | 58,5 | 66 | 14 |
| 70 | M 16x2 | 16 | 16 | 22 | 64 | 32 | 32 | 26 | 82 | 40 | 64 | 28 | 21 | 42 | 85 | 27 | 15° | 71,5 | 79 | 16 |
| 85 | M 18x2,5 | 18 | 18 | 27 | 72 | 36 | 36 | 30 | 94 | 46 | 71 | 32 | 23 | 46 | 94 | 31 | 15° | 78,5 | 88 | 18 |
| 100 | M 20x2,5 | 20 | 20 | 32 | 80 | 40 | 40 | 34 | 105 | 51 | 77 | 33 | 25 | 50 | 102 | 34 | 14° | 82 | 91 | 20 |

