





CARATTERISTICHE TECNICHE

A doppio effetto con deceleratori (magnetico su richiesta).

alesaggi	32	40	50	63	80	100	125	160	200
lunghezza deceleratore	27	30	30	35	35	40	40	50	50

fissaggi flangia anteriore - flangia posteriore - piedini - cerniera anteriore - cerniera posteriore - cerniera intermedia - controcerniera verticale - controcerniera orizzontale - forcella su stelo - a tiranti sporgenti (solo su richiesta)

versioni stelo semplice - stelo passante

versioni speciali tandem - doppia stazione - cilindro doppio

CARATTERISTICHE FUNZIONALI

fluido aria filtrata con o senza lubrificazione

pressione max. 10 bar

temperatura 0°C ÷ 80°C (-20°C con aria secca)

CARATTERISTICHE COSTRUTTIVE

testate in lega di alluminio verniciate nere

camicia in alluminio ossidato duro

stelo in acciaio C45 cromato (su richiesta inox)

boccola guida stelo autolubrificante in bronzo sinterizzato

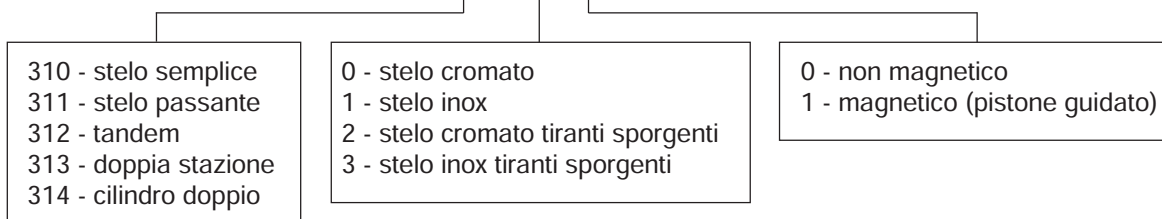
pistone monoblocco in gomma speciale NBR vulcanizzata su disco metallico (con magnete permanente in plastroferrite su richiesta)

guarnizioni in gomma speciale NBR

tiranti acciaio A37 zincati

LEGENDA CODICI

□ . □ . □ . Ø . corsa





TECHNICAL CHARACTERISTICS

Double-acting with deceleration (magnetic on request).

bores	32	40	50	63	80	100	125	160	200
decelerator length	27	30	30	35	35	40	40	50	50

- fixing** front flange - rear flange - feet - front bracket - rear bracket - intermediate bracket - vertical counter bracket - horizontal counter bracket - fork on piston rod - with jutting tie rods (only on request)
- versions** simple piston rod - double piston rod
- special versions** tandem - double station - double cylinder

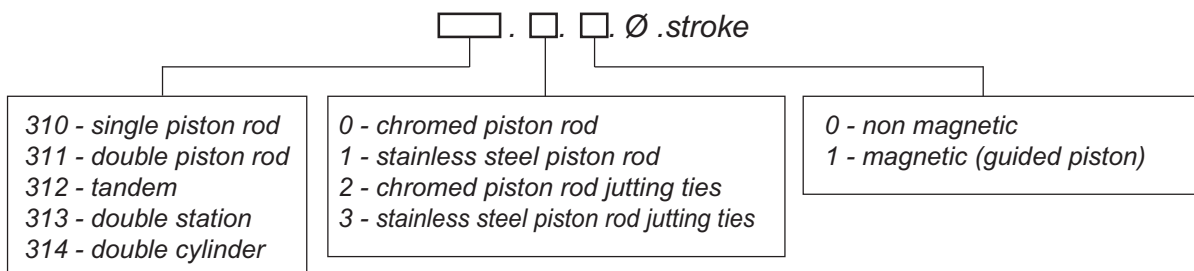
FUNCTIONING CHARACTERISTICS

- fluid** filtered air with or without librication
- max. pressure** 10 bar
- temperature** 0°C ÷ 80°C (-20°C with dry air)

MANUFACTURING CHARACTERISTICS

- end covers** black varnished aluminium alloy
- tube** hard oxidised aluminium
- piston rod** chromed C45 steel (stainless steel on request)
- piston rod guide bushing** self-lubricating in sinterised bronze
- piston** monoblock in special rubber NBR vulcanised on metallic disk (with permanent magnet in plastoferrite on request)
- seals** special rubber NBR
- rods** steel A 37 galvanised

CODE LEGEND

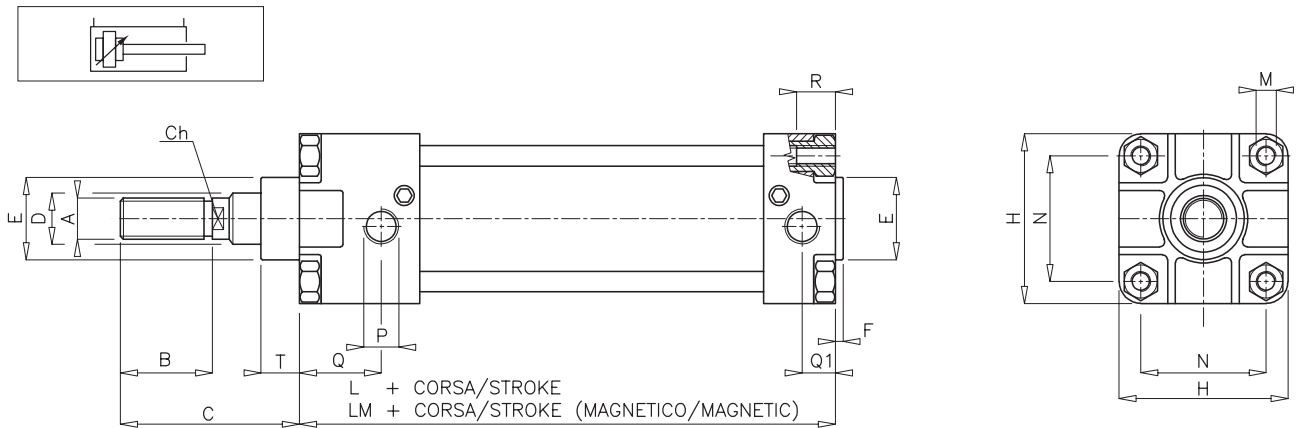


SERIE 310

diottalevi



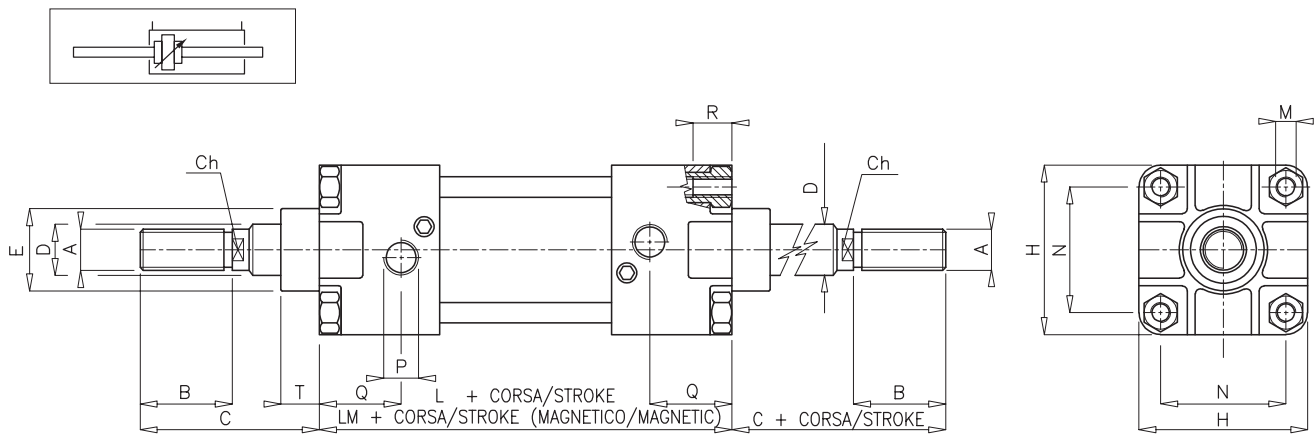
Cilindri CNOMO Cylinders CNOMO



VERSIONE STANDARD codice. **310.00** Ø.corsa

STANDARD VERSION code. **310.00** Ø.stroke

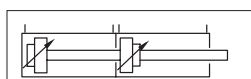
ALESAGGIO BORE	A	B	Ch	C	D	E	F	H	L	M	N	P	Q	Q1	R	T	LM
32	M 10x1,5	20	8	45	12	25	3	45	80	M 6	33	1/8"	24	14	10	15	87
40	M 16x1,5	36	13	70	18	32	3	52	110	M 6	40	1/4"	32	13	10	15	115
50	M 16x1,5	36	13	70	18	32	3	65	110	M 8	49	1/4"	32	13	12	15	113
63	M 20x1,5	46	17	85	22	45	3	75	125	M 8	59	3/8"	36	18	12	20	130
80	M 20x1,5	46	17	85	22	45	3	95	125	M10	75	3/8"	36	18	14	20	130
100	M 27x2	63	22	110	30	55	3	115	145	M10	90	1/2"	39	20	14	20	150
125	M 27x2	63	22	110	30	55	3	140	145	M12	110	1/2"	39	20	15	20	153
160	M 36x2	85	32	135	40	65	4	180	180	M16	140	3/4"	47	27	18	25	200
200	M 36x2	85	32	135	40	65	4	220	180	M16	175	3/4"	47	27	18	25	200



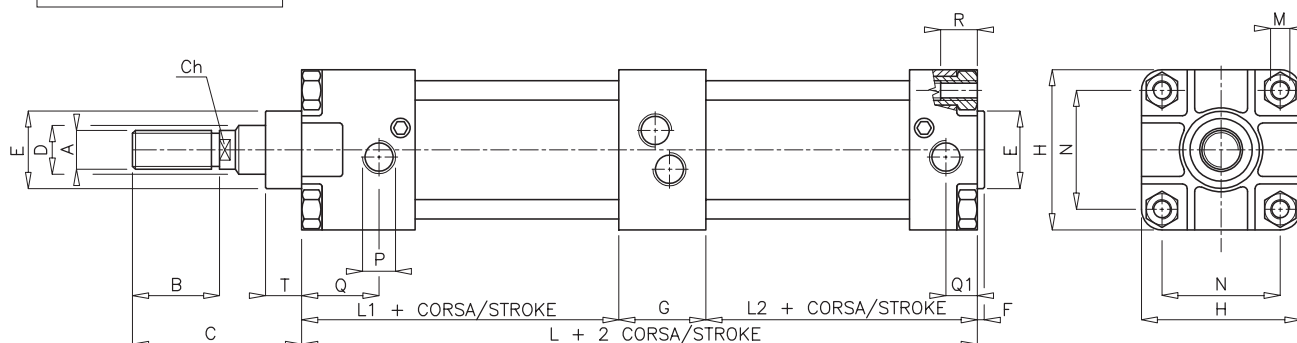
VERSIONE STANDARD stelo passante codice. **311.00** Ø.corsa

STANDARD VERSION through piston rod code. **311.00** Ø.stroke

ALESAGGIO BORE	A	B	Ch	C	D	E	H	L	M	N	P	Q	R	T	LM
32	M 10x1,5	20	8	45	12	25	45	90	M 6	33	1/8"	24	10	15	97
40	M 16x1,5	36	13	70	18	32	52	130	M 6	40	1/4"	32	10	15	135
50	M 16x1,5	36	13	70	18	32	65	130	M 8	49	1/4"	32	12	15	133
63	M 20x1,5	46	17	85	22	45	75	143	M 8	59	3/8"	36	12	20	148
80	M 20x1,5	46	17	85	22	45	95	143	M10	75	3/8"	36	14	20	148
100	M 27x2	63	22	110	30	55	115	164	M10	90	1/2"	39	14	20	169
125	M 27x2	63	22	110	30	55	140	164	M12	110	1/2"	39	15	20	172
160	M 36x2	85	32	135	40	65	180	200	M16	140	3/4"	47	18	25	220
200	M 36x2	85	32	135	40	65	220	200	M16	175	3/4"	47	18	25	220



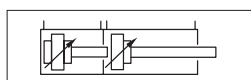
MOLTIPLICATORE DI FORZA
POWER MULTIPLIER



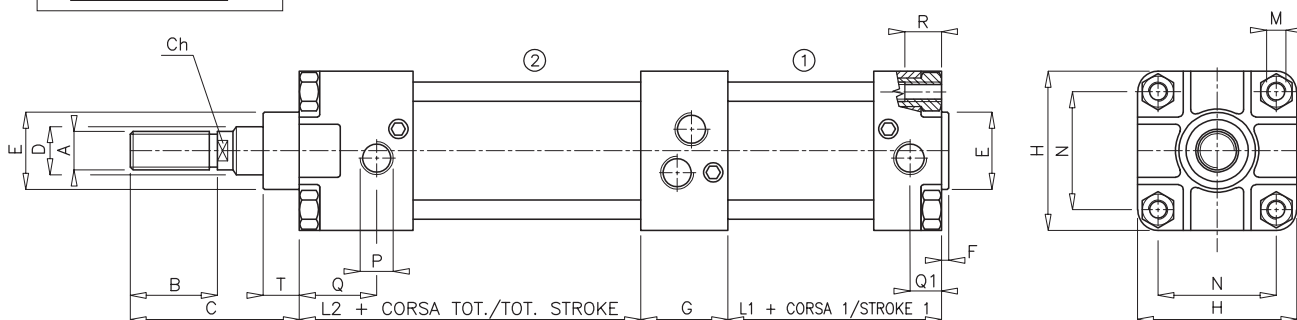
CILINDRO TANDEM * VERSIONE STANDARD codice. 312.00 Ø.corsa
TANDEM CYLINDER* STANDARD VERSION code. 312.00 Ø.stroke

ALESAGGIO BORE	A	B	Ch	C	D	E	F	G	H	L	L1	L2	M	N	P	Q	Q1	R	T
32	M 10x1,5	20	8	45	12	25	3	23	45	129	58	48	M 6	33	1/8"	24	14	10	15
40	M 16x1,5	36	13	70	18	32	3	30	52	177	83	64	M 6	40	1/4"	32	13	10	15
50	M 16x1,5	36	13	70	18	32	3	30	65	177	83	64	M 8	49	1/4"	32	13	12	15
63	M 20x1,5	46	17	85	22	45	3	32	75	198	92	74	M 8	59	3/8"	36	18	12	20
80	M 20x1,5	46	17	85	22	45	3	32	95	198	92	74	M10	75	3/8"	36	18	14	20
100	M 27x2	63	22	110	30	55	3	45	115	238	106	87	M10	90	1/2"	39	20	14	20
125	M 27x2	63	22	110	30	55	3	45	140	238	106	87	M12	110	1/2"	39	20	15	20
160	M 36x2	85	32	135	40	65	4	53	180	293	130	110	M16	140	3/4"	47	27	18	25
200	M 36x2	85	32	135	40	65	4	53	220	293	130	110	M16	175	3/4"	47	27	18	25

*A richiesta ulteriori camere di spinta / Other thrust chambers on request



STAZIONI MULTIPLE
MULTIPLE STATION

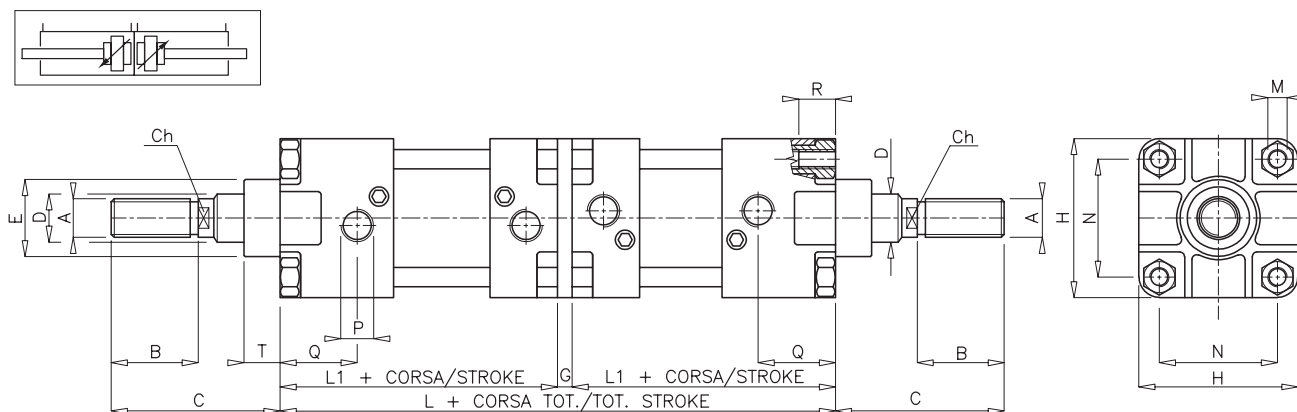


CILINDRO DOPPIA STAZIONE * VERSIONE STANDARD codice. 313.00 Ø.corsa totale **
DOUBLE STATION CYLINDER* STANDARD VERSION code. 313.00 Ø.overall stroke **

ALESAGGIO BORE	A	B	Ch	C	D	E	F	G	H	L1	L2	M	N	P	Q	Q1	R	T
32	M 10x1,5	20	8	45	12	25	3	33	45	48	68	M 6	33	1/8"	24	14	10	15
40	M 16x1,5	36	13	70	18	32	3	36	52	64	93	M 6	40	1/4"	32	13	10	15
50	M 16x1,5	36	13	70	18	32	3	36	65	64	93	M 8	49	1/4"	32	13	12	15
63	M 20x1,5	46	17	85	22	45	3	42	75	74	102	M 8	59	3/8"	36	18	12	20
80	M 20x1,5	46	17	85	22	45	3	42	95	74	102	M10	75	3/8"	36	18	14	20
100	M 27x2	63	22	110	30	55	3	49	115	87	116	M10	90	1/2"	39	20	14	20
125	M 27x2	63	22	110	30	55	3	49	140	87	116	M12	110	1/2"	39	20	15	20
160	M 36x2	85	32	135	40	65	4	69	180	110	145	M16	140	3/4"	47	27	18	25
200	M 36x2	85	32	135	40	65	4	69	220	110	145	M16	175	3/4"	47	27	18	25

* A richiesta ulteriori stazioni / Other stations on request

** In fase di ordinazione indicare anche la corsa della 1ª stazione / When ordering also indicate the 1st station stroke

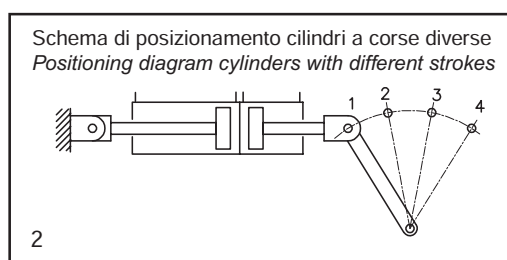
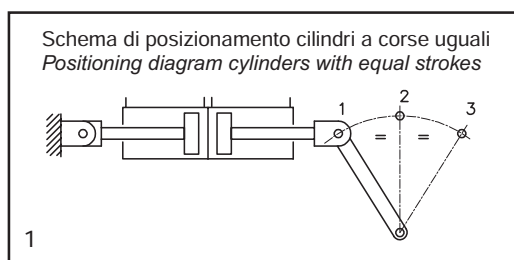


CILINDRO DOPPIO VERSIONE STANDARD codice. 314.00 Ø.corsa totale *
DOUBLE CYLINDER STANDARD VERSION code. 314.00 Ø.overall stroke *

ALESAGGIO BORE	A	B	Ch	C	D	E	G	H	L	L1	M	N	P	Q	R	T
32	M 10x1,5	20	8	45	12	25	7	45	167	80	M 6	33	1/8"	24	10	15
40	M 16x1,5	36	13	70	18	32	7	52	227	110	M 6	40	1/4"	32	10	15
50	M 16x1,5	36	13	70	18	32	7	65	227	110	M 8	49	1/4"	32	12	15
63	M 20x1,5	46	17	85	22	45	7	75	257	125	M 8	59	3/8"	36	12	20
80	M 20x1,5	46	17	85	22	45	7	95	257	125	M10	75	3/8"	36	14	20
100	M 27x2	63	22	110	30	55	7	115	297	145	M10	90	1/2"	39	14	20
125	M 27x2	63	22	110	30	55	7	140	297	145	M12	110	1/2"	39	15	20
160	M 36x2	85	32	135	40	65	10	180	370	180	M16	140	3/4"	47	18	25
200	M 36x2	85	32	135	40	65	10	220	370	180	M16	175	3/4"	47	18	25

* In fase di ordinazione indicare sempre le due corse separatamente / When ordering always indicate the two strokes separately

ESEMPIO FUNZIONALE CILINDRI DOPPI
FUNCTIONAL EXAMPLE DOUBLE CYLINDERS



La scelta del cilindro doppio si rende necessaria quando si deve ottenere lo spostamento di carichi a tre o quattro posizioni.

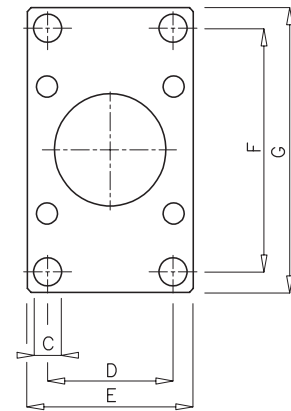
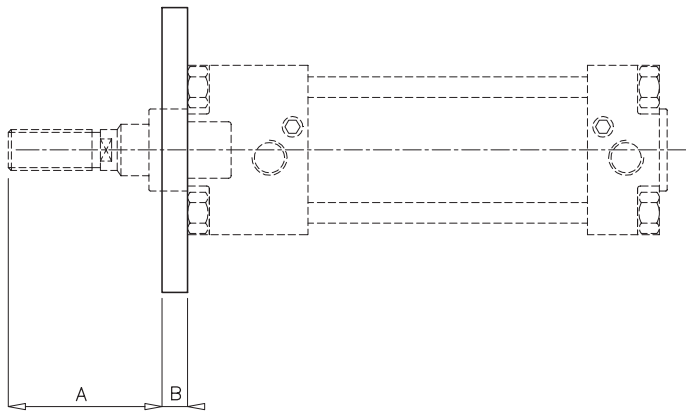
Con un cilindro doppio a corse uguali si ottengono tre posizioni come illustrato nella figura 1.

Con un cilindro doppio a corse diverse si possono ottenere quattro posizioni come illustrato nella figura 2.

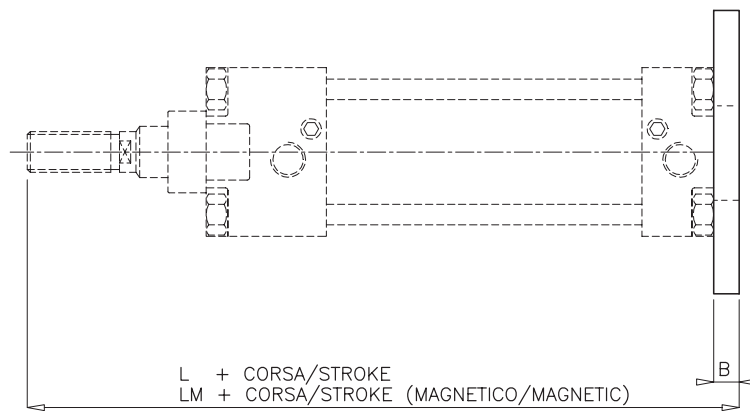
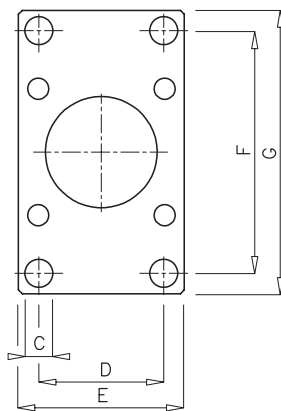
It is necessary to choose the double cylinder when you have to obtain the movement of loads by three or four positions.

A double cylinder with equal strokes allows achieving three positions as illustrated in figure 1.

A double cylinder with different strokes allows achieving four positions as illustrated in figure 2.



FLANGIA ANTERIORE codice. **319.01** Ø.cilindro
FRONT FLANGE code. **319.01** Ø.cylinder



FLANGIA POSTERIORE codice. **319.02** Ø.cilindro
REAR FLANGE code. **319.02** Ø.cylinder

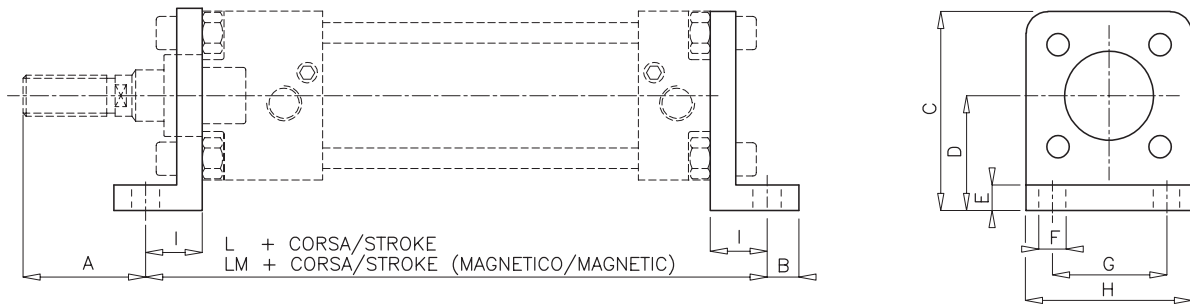
ALESAGGIO BORE	A	B	C	D	E	F	G	L	LM
32	37	8	9	33	45	68	80	133	140
40	62	8	9	40	52	78	90	188	193
50	60	10	11	49	65	94	110	190	193
63	75	10	11	59	75	104	120	220	225
80	73	12	14	75	95	130	150	222	227
100	98	12	14	90	115	150	170	267	272
125	94	16	18	110	140	180	205	271	279
160	115	20	22	140	180	228	260	335	355
200	115	20	22	175	220	268	300	335	355

SERIE 319

diottalevi

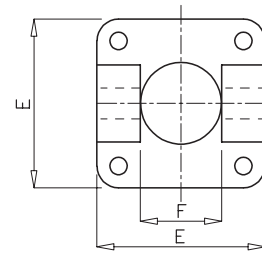
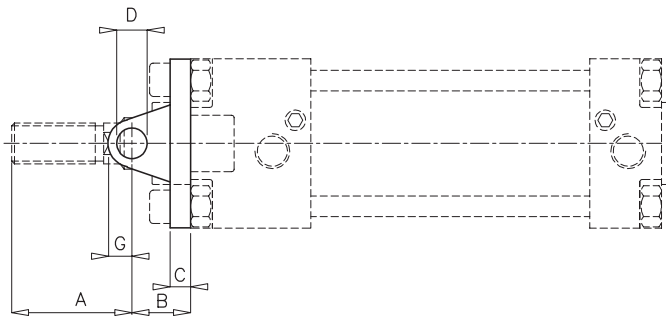


Accessori cilindri CNOMO CNOMO cylinders - accessories

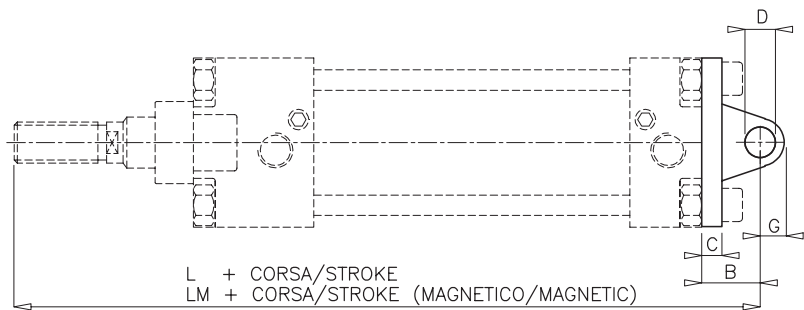
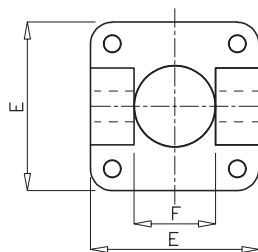


PIEDINO codice. **319.03** Ø.cilindro
FOOT code. **319.03** Ø.cylinder

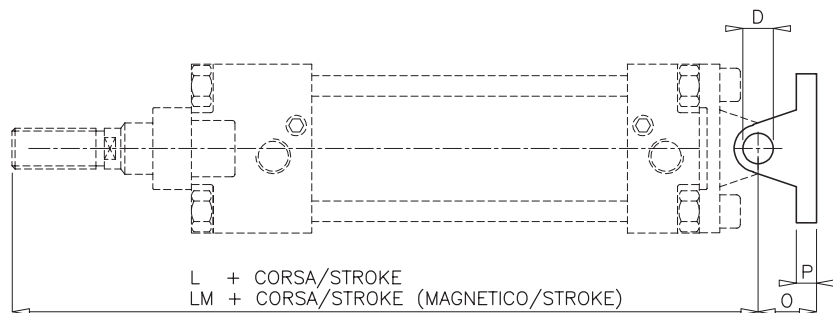
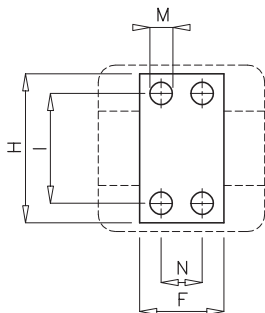
ALESAGGIO BORE	A	B	C	D	E	F	G	H	I	L	LM
32	18	8	54	32	8	9	28	45	27	134	141
40	43	8	62	36	8	9	36	52	27	164	169
50	35	10	77	45	10	11	45	65	35	180	183
63	50	10	87	50	10	11	55	75	35	195	200
80	42	12	110	63	12	14	70	95	43	211	216
100	67	12	130	73	12	14	90	115	43	231	236
125	58	16	161	91	16	18	100	140	52	249	257
160	73	18	205	115	20	22	130	180	62	304	324
200	73	18	245	135	20	22	170	220	62	304	324



CERNIERA ANTERIORE codice. **319.05** Ø.cilindro
FRONT BRACKET code. **319.05** Ø.cylinder

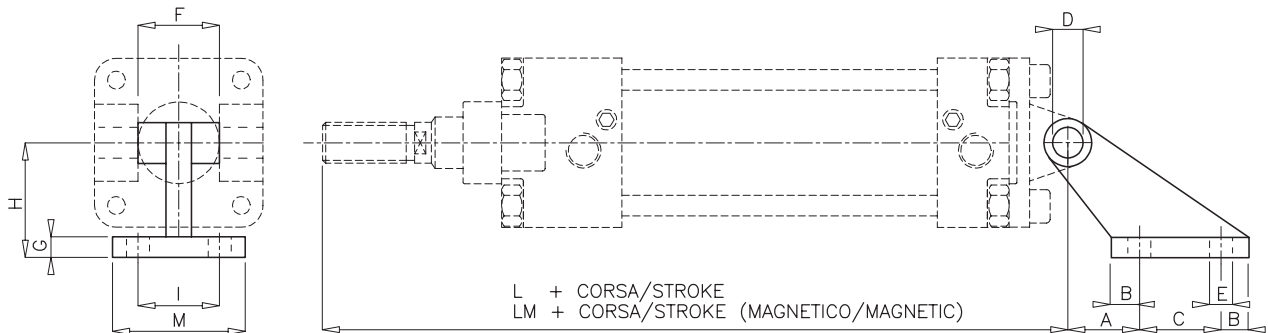


CERNIERA POSTERIORE codice. **319.06** Ø.cilindro
REAR BRACKET code. **319.06** Ø.cylinder

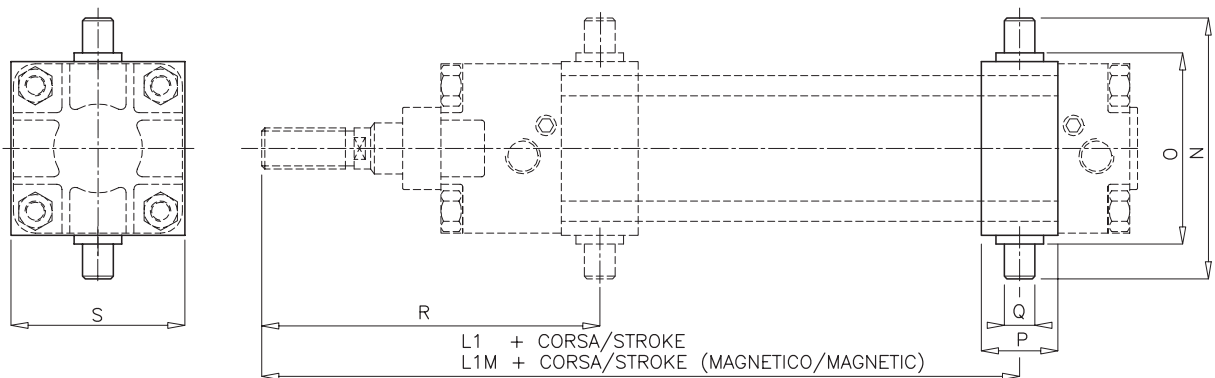


CONTROCERNIERA VERTICALE codice. **319.07** Ø.cilindro
VERTICAL COUNTER-BRACKET code. **319.07** Ø.cylinder

ALESAGGIO BORE	A	B	C	D	E	F	G	H	I	L	LM	M	N	O	P
32	27	18	8	8	45	26	11	40	28	143	150	7	10	18	8
40	46	24	8	12	52	33	11	52	38	204	209	9	16	26	10
50	44	26	10	12	65	33	13	52	38	206	209	9	16	26	10
63	55	30	10	16	75	47	17	75	54	240	245	11	25	34	12
80	53	32	12	16	95	47	17	75	54	242	247	11	25	34	12
100	73	37	12	20	115	57	21	115	90	292	297	13	32	41	16
125	69	41	16	20	140	57	29	115	90	296	304	13	32	41	16
160	80	55	20	25	180	72	30	180	150	370	390	17	43	55	20
200	80	55	20	25	220	72	30	180	150	370	390	17	43	55	20



CONTROCERNIERA ORIZZONTALE A 90° codice. **319.08** Ø.cilindro
HORIZONATAL COUNTER-BRACKET 90° code. **319.08** Ø.cylinder



CERNIERA INTERMEDIA FISSA codice. **319.09** Ø.cilindro
FIXED INTERMEDIATE BRACKET code. **319.09** Ø.cylinder

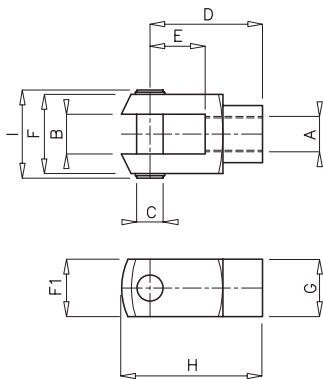
ALESAGGIO BORE	A	B	C	D	E	F	G	H	I	L	LM	L1	L1M	M	N	O	P	Q	R	S
32	18	8,5	20	8	7	26	8	32	25	143	150	93	100	41	74	50	20	12	87	50
40	25	11	32	12	9	33	10	45	32	204	209	142	147	52	95	63	20	16	127	60
50	25	11	32	12	9	33	10	45	32	206	209	142	145	52	105	73	20	16	127	70
63	32	12,5	50	16	11	47	12	63	40	240	245	162	167	63	130	90	30	20	151	80
80	32	12,5	50	16	11	47	12	63	40	242	247	162	167	63	148	108	30	20	151	100
100	40	16,5	70	20	13	57	16	90	50	292	297	201	206	80	181	131	30	25	183	130
125	40	16,5	70	20	13	57	16	90	50	296	304	201	209	80	209	159	30	25	183	150
160	50	22	110	25	17	72	20	140	63	370	390	245	265	110	264	200	40	32	225	200
200	50	22	110	25	17	72	20	140	63	370	390	245	265	110	314	250	40	32	225	250

Accessori cilindri CNOMO
CNOMO cylinders - accessories

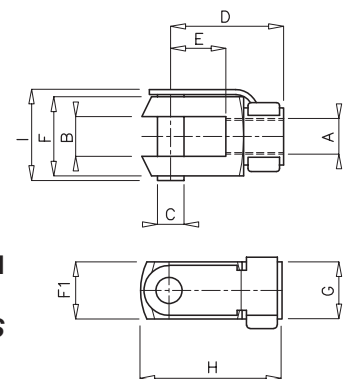


SERIE 319

diottalevi

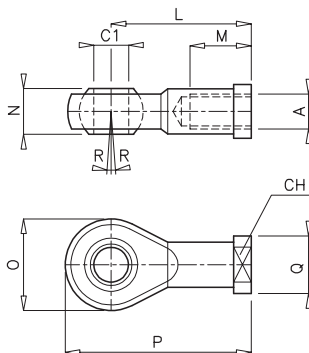


FORCELLA CON PERNO codice. **319.10** Ø .cilindro
FORK WITH PIN code. **319.10** Ø .cylinder

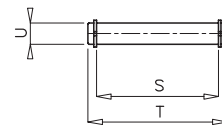


ESCLUSI ALESAGGI
160 E 200
ESCLUDING BORES
160 E 200

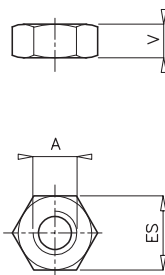
FORCELLA CON CLIPS codice. **319.11** Ø .cilindro
FORK WITH CLIPS code. **319.11** Ø .cylinder



SNODO SFERICO codice. **319.12** Ø .cilindro
BALL JOINT code. **319.12** Ø .cylinder



PERNO CERNIERA codice. **319.13** Ø .cilindro
BRACKET PIN code. **319.13** Ø .cylinder



DADO PER STELO codice. **319.14** Ø .cilindro
PISTON ROD NUT code. **319.14** Ø .cylinder

Sono previsti **KIT DI GUARNIZIONI DI RICAMBIO** su tutte le serie di cilindri
SPARE SEAL KITS are provided for all cylinder series

ALESAGGIO BORE	A	B	Ch	C	C1	ES	D	E	F	F1	G	H	I	L	M	N	O	P	Q	R	S	T	U	V
32	M 10x1,5	11	17	8	10	17	36	16	22	22	18	45	29	43	15	14	26	56	19	13°	46	53	8	6
40	M 16x1,5	18	22	12	16	24	51	25	36	26	26	64	43	64	24	21	38	83	27	15°	56	63	12	8
50	M 16x1,5	18	22	12	16	24	51	25	36	26	26	64	43	64	24	21	38	83	27	15°	67	74	12	8
63	M 20x1,5	22	30	16	20	30	63	33	45	34	34	80	53	77	30	25	46	103	37	15°	77	84	16	9
80	M 20x1,5	22	30	16	20	30	63	33	45	34	34	80	53	77	30	25	46	103	37	15°	96	103	16	9
100	M 27x2	30	41	20	30	41	85	40	63	42	42	105	72	110	45	37	68	144	50	15°	115	124	20	12
125	M 27x2	30	41	20	30	41	85	40	63	42	42	105	72	110	45	37	68	144	50	15°	141	150	20	12
160	M 36x2	40	50	25	35	55	115	40	80	50	50	140	95	125	60	43	80	165	56	15°	127	141	25	14
200	M 36x2	40	50	25	35	55	115	40	80	50	50	140	95	125	60	43	80	165	56	15°	127	141	25	14

